



# ABS Labour Force Results – December 2024

The data in this document are sourced from ABS, *Labour Force, Australia, December 2024* and are in seasonally adjusted terms (unless stated otherwise). Note that changes are calculated from more detailed data and may be different from, but are more accurate than, changes calculated manually from the figures presented in the text and tables.

## OVERVIEW

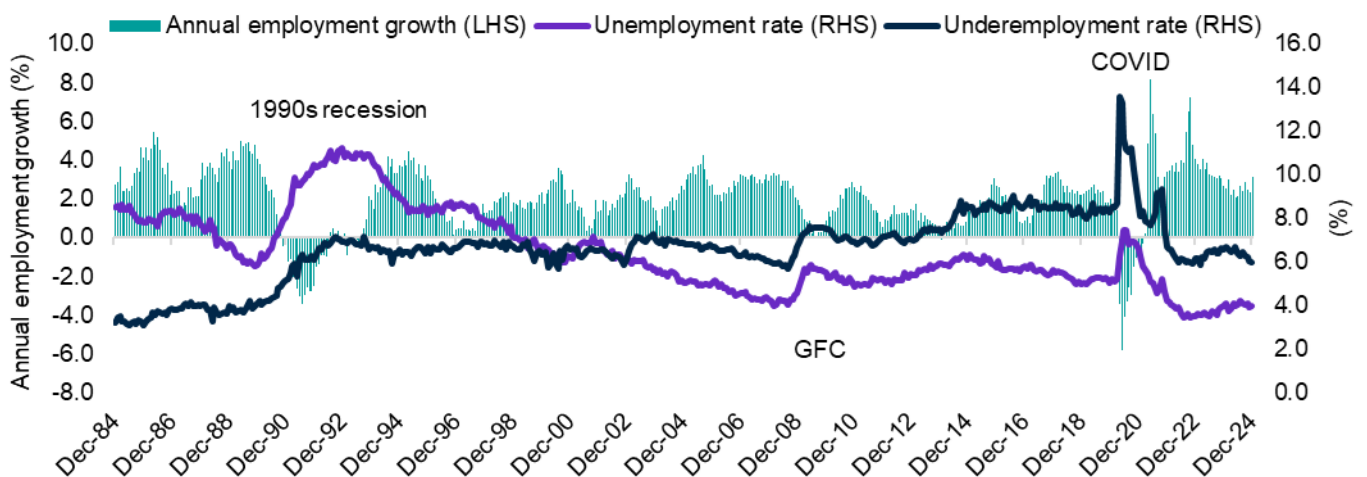
	Dec-24	Monthly change		Annual change	
		('000)	(%)	('000)	(%)
Employment ('000)	14,584.4*	56.3	0.4	444.4	3.1
<i>Full-time employment ('000)</i>	10,037.6	-23.7	-0.2	299.0	3.1
<i>Part-time employment ('000)</i>	4,546.8*	80.0	1.8	145.4	3.3
Hours worked (million hours)	1,976.1*	10.4	0.5	61.1	3.2
Participation rate (%)	67.1**	-	0.2 pts	-	0.5 pts
Unemployment rate (%)	4.0	-	0.1 pts	-	0.0 pts
Underemployment rate (%)	6.0	-	-0.1 pts	-	-0.6 pts
Youth (15-24 years) unemployment rate (%)	9.1	-	0.4 pts	-	-0.5 pts

Note: \*Record high \*\*Equal record high

The latest ABS *Labour Force Survey* (LFS) results continue to reflect the resilience of the Australian labour market. Indeed, **employment** increased by 56,300 over the month (exceeding all market expectations), to stand at a record high of 14,584,400 in December 2024, and is now 444,400 (or 3.1%) above the level recorded 12 months ago. It is worth noting that *annual* employment growth outpaced growth in the civilian population, which increased by (a still strong) 2.4% over the year.

- Abstracting from the volatility inherent in the monthly estimates, the pace of *trend* employment growth has gradually softened, from its recent peak of 42,200 in August 2024, to (a still strong) 31,000 in December 2024.

The **unemployment rate** increased by 0.1 percentage points over the month, to 4.0% in December 2024 (equivalent to the rate recorded a year ago). The **participation rate** rose by 0.2 percentage points over the month and by 0.5 percentage points over the year, to stand at an equal record high, of 67.1%.



## EMPLOYMENT

	Dec-24	Monthly change		Annual change	
		('000)	(%)	('000)	(%)
Total employment ('000)	14,584.4*	56.3	0.4	444.4	3.1
Men	7,627.7*	46.9	0.6	254.0	3.4
Women	6,956.7*	9.5	0.1	190.3	2.8
Full-time employment ('000)	10,037.6	-23.7	-0.2	299.0	3.1
Men	6,069.8	-25.7	-0.4	139.8	2.4
Women	3,967.8*	2.0	0.0	159.2	4.2
Part-time employment ('000)	4,546.8*	80.0	1.8	145.4	3.3
Men	1,557.9*	72.6	4.9	114.2	7.9
Women	2,988.9*	7.5	0.3	31.2	1.1

Note: \*Record high

Full-time employment fell by 23,700 over the month, to stand at 10,037,600 in December 2024, but has risen by 299,000 (or 3.1%) over the year.

Part-time employment increased over the month, by 80,000, to stand at a record high of 4,546,800 in December, and has risen by 145,400 (or 3.3%) over the year.

Full-time employment, part-time employment and total employment were at a record high for women in December 2024, while part-time employment and total employment were at a record high for men.

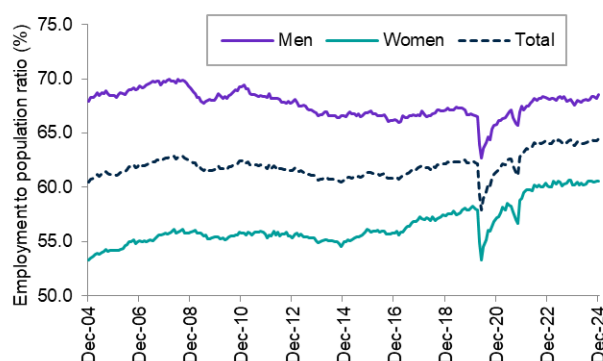
## EMPLOYMENT TO POPULATION RATIO

	Dec-24	Monthly change (% pts)	Annual change (% pts)
Employment to population ratio (%)	64.5*	0.1	0.5
Men	68.5	0.3	0.7
Women	60.5	0.0	0.3

Note: \*Record high

The employment to population ratio increased by 0.1 percentage points in December, to stand at a record high of 64.5%, and is now 0.5 percentage points above the rate recorded a year ago.

The employment to population ratio for men increased by 0.3 percentage points over the month, while it declined marginally for women over the same period.



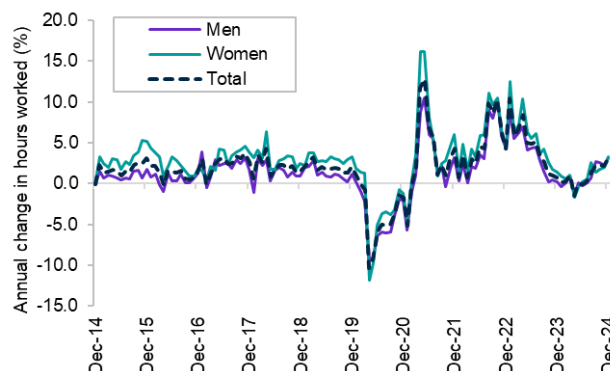
## HOURS WORKED

	Dec-24	Monthly change (millions)	Monthly change (%)	Annual change (millions)	Annual change (%)
Total hours worked (millions)	1,976.1*	10.4	0.5	61.1	3.2
Men	1,135.5*	5.9	0.5	34.2	3.1
Women	840.6	4.5	0.5	26.9	3.3

Note: \*Record high

Hours worked increased by 10.4 million hours in December 2024, to stand at a record high, and are now 61.1 million hours (or 3.2%) above the level recorded a year ago.

Hours worked for men rose by 5.9 million hours in December 2024, to stand at a record high, while hours worked for women also increased over the same period, by 4.5 million hours.

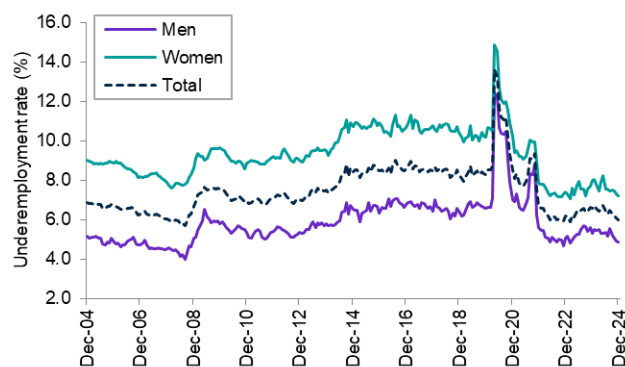


## UNDEREMPLOYMENT

	Dec-24	Monthly change		Annual change	
		('000)	(%)	('000)	(%)
Underemployment ('000)	907.8	-9.5	-1.0	-61.1	-6.3
Men	386.7	-3.3	-0.8	-19.4	-4.8
Women	521.1	-6.2	-1.2	-41.8	-7.4
Underemployment rate (%)	6.0	-	-0.1 pts	-	-0.6 pts
Men	4.9	-	-0.1 pts	-	-0.4 pts
Women	7.2	-	-0.1 pts	-	-0.8 pts

The underemployment rate fell by 0.1 percentage points over the month, to 6.0% in December 2024, and is 0.6 percentage points below the rate recorded a year ago.

The underemployment rate fell by 0.1 percentage points for both men and women in December 2024.

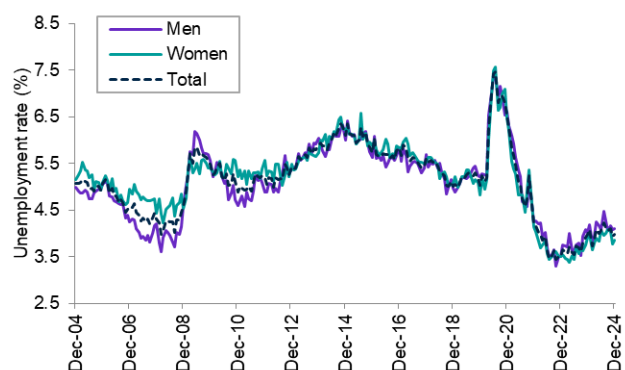


## UNEMPLOYMENT

	Dec-24	Monthly change		Annual change	
		('000)	(%)	('000)	(%)
Unemployment ('000)	604.1	10.3	1.7	19.5	3.3
Men	325.7	3.9	1.2	17.6	5.7
Women	278.4	6.4	2.4	1.9	0.7
Unemployment rate (%)	4.0	-	0.1 pts	-	0.0 pts
Men	4.1	-	0.0 pts	-	0.1 pts
Women	3.8	-	0.1 pts	-	-0.1 pts

The unemployment rate rose by 0.1 percentage points in December, to 4.0%, but was equivalent to the rate recorded a year ago.

The unemployment rate for men was steady over the month, while the unemployment rate for women rose marginally over the same period.



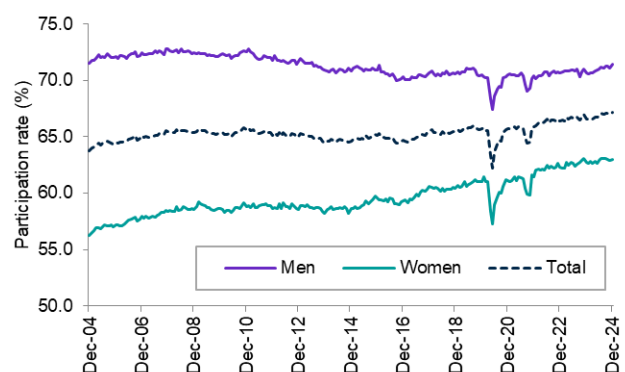
## PARTICIPATION

	Dec-24	Monthly change		Annual change	
		(% pts)	(% pts)	(% pts)	(% pts)
Participation rate (%)	67.1**	0.2	0.5		
Men	71.4	0.3	0.8		
Women	62.9	0.0	0.2		

Note: \*\*Equal record high

The participation rate rose by 0.2 percentage points in December, to stand at an equal record high of 67.1%, and is now 0.5 percentage points above the rate recorded a year ago.

The participation rate for men rose by 0.3 percentage points over the month, while the participation rate for women was steady over the same period.



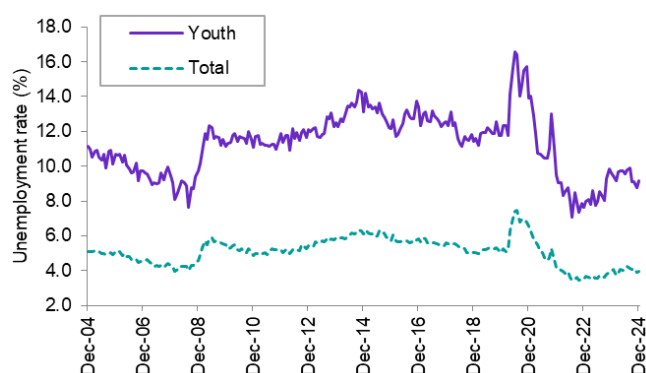
## YOUTH (15-24 YEARS)

Youth (15-24 years)	Dec-24	Monthly change	Annual change
Employment ('000)	2,234.0	-15.8 (-0.7%)	75.7 (3.5%)
Employment to population ratio (%)	64.0	-0.5 pts	0.3 pts
Unemployment rate (%)	9.1	0.4 pts	-0.5 pts
Participation rate (%)	70.3	-0.6 pts	0.0 pts
Underemployment rate (%)	14.1	0.1 pts	-1.8 pts

Employment for young people decreased by 15,800 over the month, to stand at 2,234,000 in December 2024.

The youth unemployment rate rose by 0.4 percentage points over the month, to 9.1%, but is 0.5 percentage points lower than it was a year ago.

The youth participation rate fell by 0.6 percentage points over the month but was equivalent to the rate recorded a year ago.



## STATES AND TERRITORIES

	Employment ('000)					Unemployment rate (%)			Participation rate (%)		
	Dec-24	Monthly change		Annual change		Dec-24	Monthly change	Annual change	Dec-24	Monthly change	Annual change
		('000)	(%)	('000)	(%)		(% pts)	(% pts)		(% pts)	(% pts)
New South Wales	4,510.7*	20.6	0.5	109.9	2.5	3.8	-0.1	0.2	66.4	0.1	0.5
Victoria	3,799.9	-4.1	-0.1	132.5	3.6	4.4	0.3	0.4	68.1	0.0	0.9
Queensland	3,002.4*	15.7	0.5	119.8	4.2	3.9	0.0	-0.4	67.5	0.2	0.7
South Australia	951.8	5.3	0.6	11.9	1.3	4.2	0.3	0.2	63.1	0.4	0.0
Western Australia	1,641.8*	9.7	0.6	71.1	4.5	3.3	0.0	-0.8	69.1	0.3	0.3
Tasmania	279.4	-0.3	-0.1	-7.9	-2.8	4.3	0.4	0.7	60.3	0.1	-1.7
Northern Territory	138.9	0.8	0.6	0.2	0.1	4.2	0.3	-0.2	72.2	0.6	-1.0
Australian Capital Territory	272.0	-1.3	-0.5	7.3	2.7	3.1	0.2	-0.9	72.1	-0.3	-0.1
<b>Australia</b>	<b>14,584.4*</b>	<b>56.3</b>	<b>0.4</b>	<b>444.4</b>	<b>3.1</b>	<b>4.0</b>	<b>0.1</b>	<b>0.0</b>	<b>67.1**</b>	<b>0.2</b>	<b>0.5</b>

Note: \*Record high \*\*Equal record high

Employment rose in 5 jurisdictions in December 2024, with New South Wales recording the largest increase (of 20,600) followed by Queensland (up by 15,700). Victoria recorded the largest fall in employment over the month (of 4,100), followed by the Australian Capital Territory (down by 1,300). Employment stood at a record high in New South Wales, Queensland and Western Australia in December 2024.

The unemployment rate rose in 5 jurisdictions in December 2024, with 4 jurisdictions recording an unemployment rate above 4.0%. Victoria recorded the highest unemployment rate (of 4.4%), while the Australian Capital Territory recorded the lowest unemployment rate (of 3.1%).

The participation rate rose in 6 jurisdictions over the month, with the largest increase recorded in the Northern Territory (up by 0.6 percentage points). The Northern Territory also recorded the highest participation rate (of 72.2%), followed by the Australian Capital Territory (of 71.1%), while Tasmania recorded the lowest participation rate (of 60.3%).

New South Wales and the Australian Capital Territory recorded the lowest *youth* unemployment rate (both at 8.8%) in December 2024, while Victoria recorded the highest youth unemployment rate (of 10.6%), followed by Tasmania (at 10.5%) – see table, overleaf.

Youth (15-24 years) unemployment rate	Dec-24	Monthly change (% pts)	Annual change (% pts)
New South Wales	8.8	0.1	1.6
Victoria	10.6	0.1	1.5
Queensland	9.2	-0.2	0.2
South Australia	9.6	-0.1	0.3
Western Australia	8.9	-0.5	0.0
Tasmania	10.5	0.2	0.1
Northern Territory	9.3	0.2	-2.2
Australian Capital Territory	8.8	-0.1	1.1
<b>Australia</b>	9.1	0.4	-0.5

Data for the states and territories are 12-month averages of *original* estimates, while the data for Australia are in *seasonally adjusted* terms.