



Industry profile

Tasmania

Release date: 17 October 2024

Overview

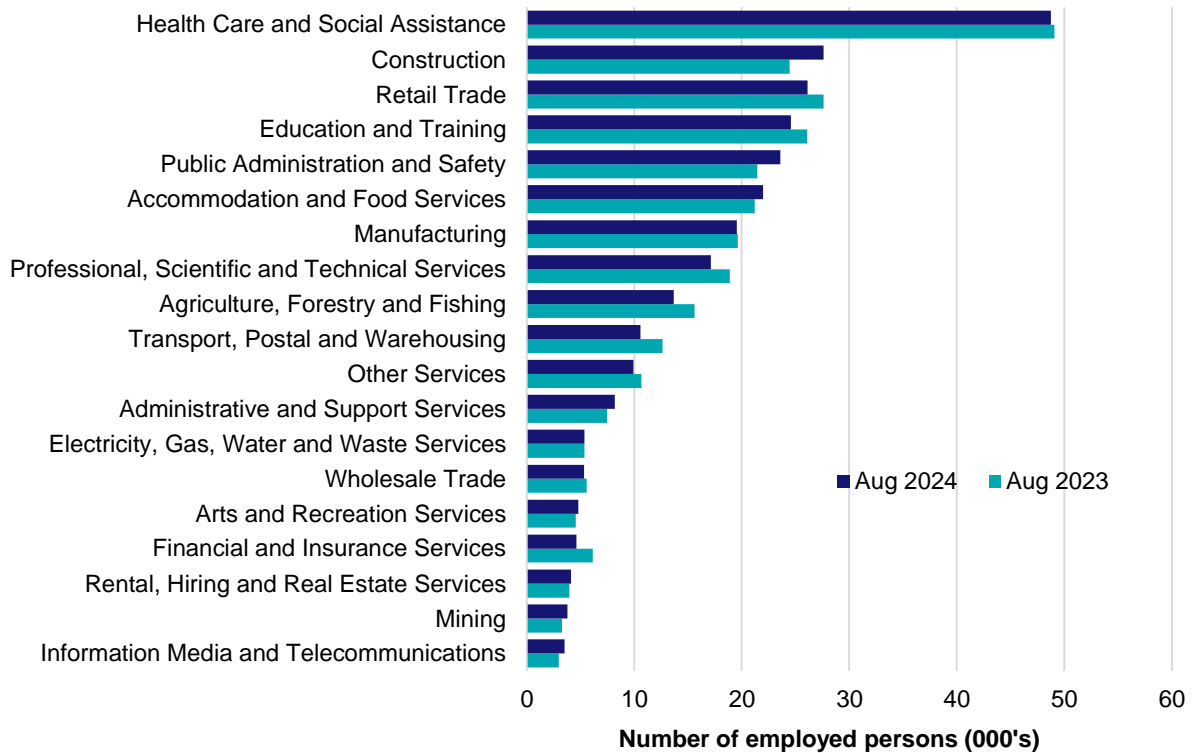
In August 2024, there were around 283,300 people employed in Tasmania. The 5 largest employing industries in Tasmania were Health Care and Social Assistance, Construction, Retail Trade, Education and Training and Public Administration and Safety. Together these 5 industries accounted for 53% of all employment.

Over the year to August 2024, employment in:

- Health Care and Social Assistance fell by 0.7% to stand at 48,800
- Construction rose by 12.9% to stand at 27,600
- Retail Trade fell by 5.3% to stand at 26,100.

In Health Care and Social Assistance in Tasmania, 52% of workers were employed part-time; 79% were Female; and the median age of the workforce was 43. Around 49% of employed persons in this industry were located in Greater Hobart.

Employment by industry, August 2024 and August 2023

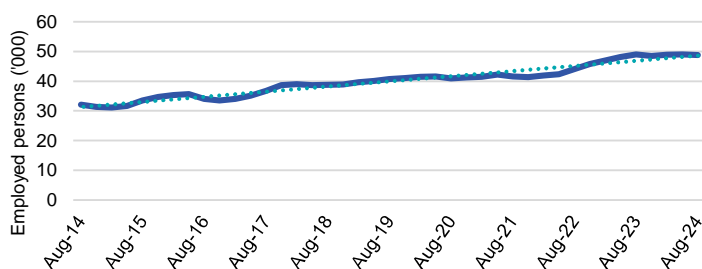


Source: ABS Labour Force Survey, Detailed, four quarter averages, August 2024. Note that total employment (four quarter averaged data) may not match data published in the Labour Market dashboards (seasonally adjusted data).

Note: For any enquiries related to the data in this report, contact RegionalWorkforceAssessment@jobsandskills.gov.au

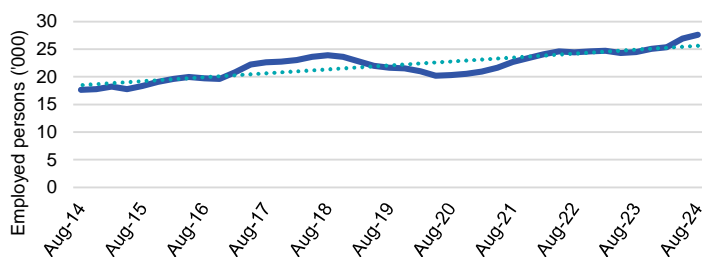
Five largest employing industries: key statistics

Health Care and Social Assistance



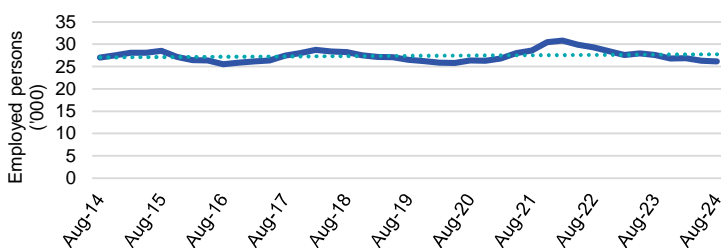
| | |
|---------------------------------|--------|
| Number employed (Aug-24): | 48,800 |
| 1 year employment change: | -0.7% |
| 5 year employment change: | 19.9% |
| 10 year employment change: | 51.8% |
| Youth share of employment: | 10.2% |
| Mature age share of employment: | 18.6% |

Construction



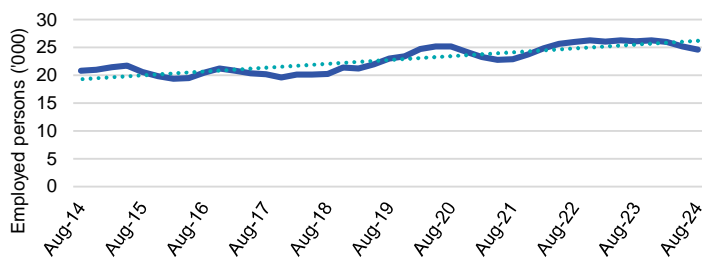
| | |
|---------------------------------|--------|
| Number employed (Aug-24): | 27,600 |
| 1 year employment change: | 12.9% |
| 5 year employment change: | 27.7% |
| 10 year employment change: | 56.4% |
| Youth share of employment: | 11.1% |
| Mature age share of employment: | 7.8% |

Retail Trade



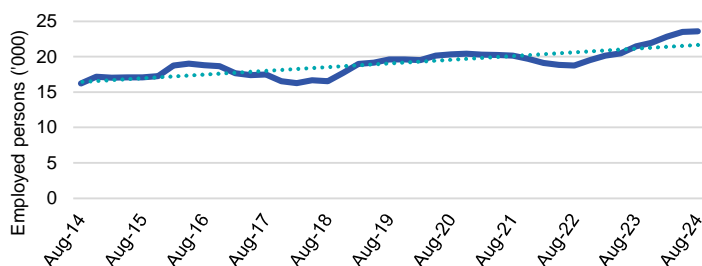
| | |
|---------------------------------|--------|
| Number employed (Aug-24): | 26,100 |
| 1 year employment change: | -5.3% |
| 5 year employment change: | -1.3% |
| 10 year employment change: | -3.2% |
| Youth share of employment: | 20.4% |
| Mature age share of employment: | 7.5% |

Education and Training



| | |
|---------------------------------|--------|
| Number employed (Aug-24): | 24,600 |
| 1 year employment change: | -5.8% |
| 5 year employment change: | 6.9% |
| 10 year employment change: | 18.2% |
| Youth share of employment: | 4.8% |
| Mature age share of employment: | 10.8% |

Public Administration and Safety



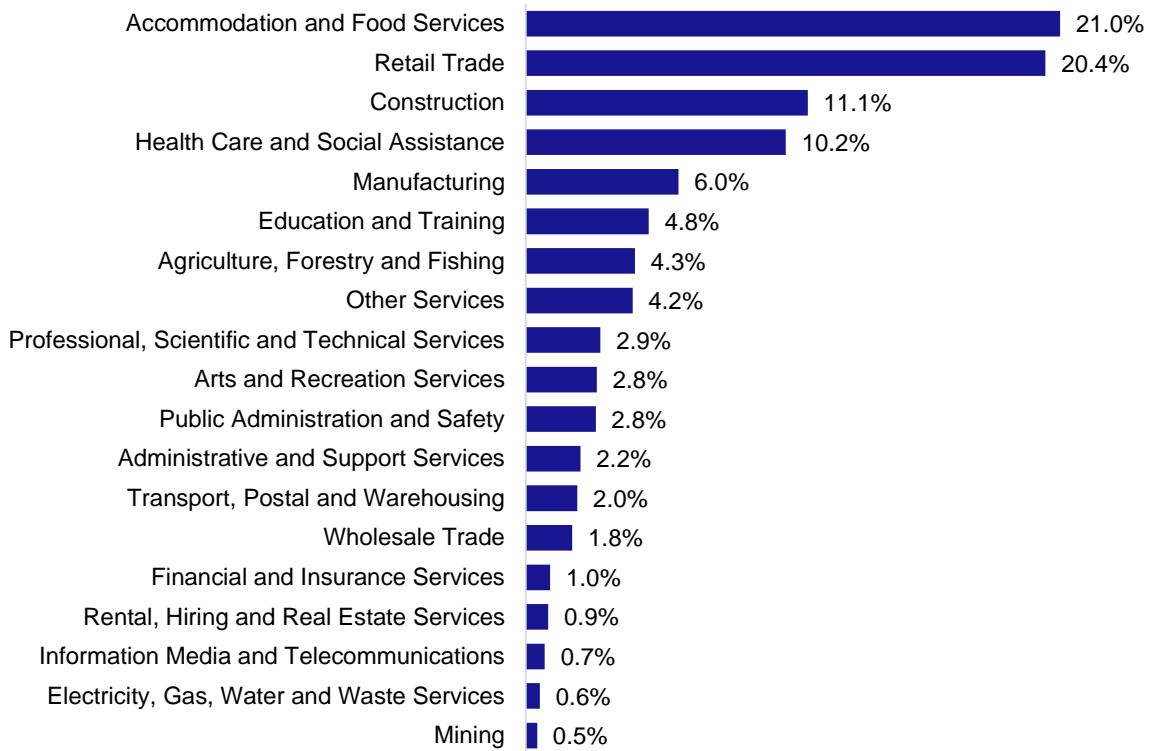
| | |
|---------------------------------|--------|
| Number employed (Aug-24): | 23,600 |
| 1 year employment change: | 10.1% |
| 5 year employment change: | 20.5% |
| 10 year employment change: | 45.5% |
| Youth share of employment: | 2.8% |
| Mature age share of employment: | 8.0% |

Source: ABS Labour Force Survey, Detailed, four quarter averages, August 2024, except youth and mature age data which are from the ABS Census of Population and Housing, 2021.

Note: In each chart, the solid line is the level of employment and the dotted line is a simple linear trend line for the 10 year period.

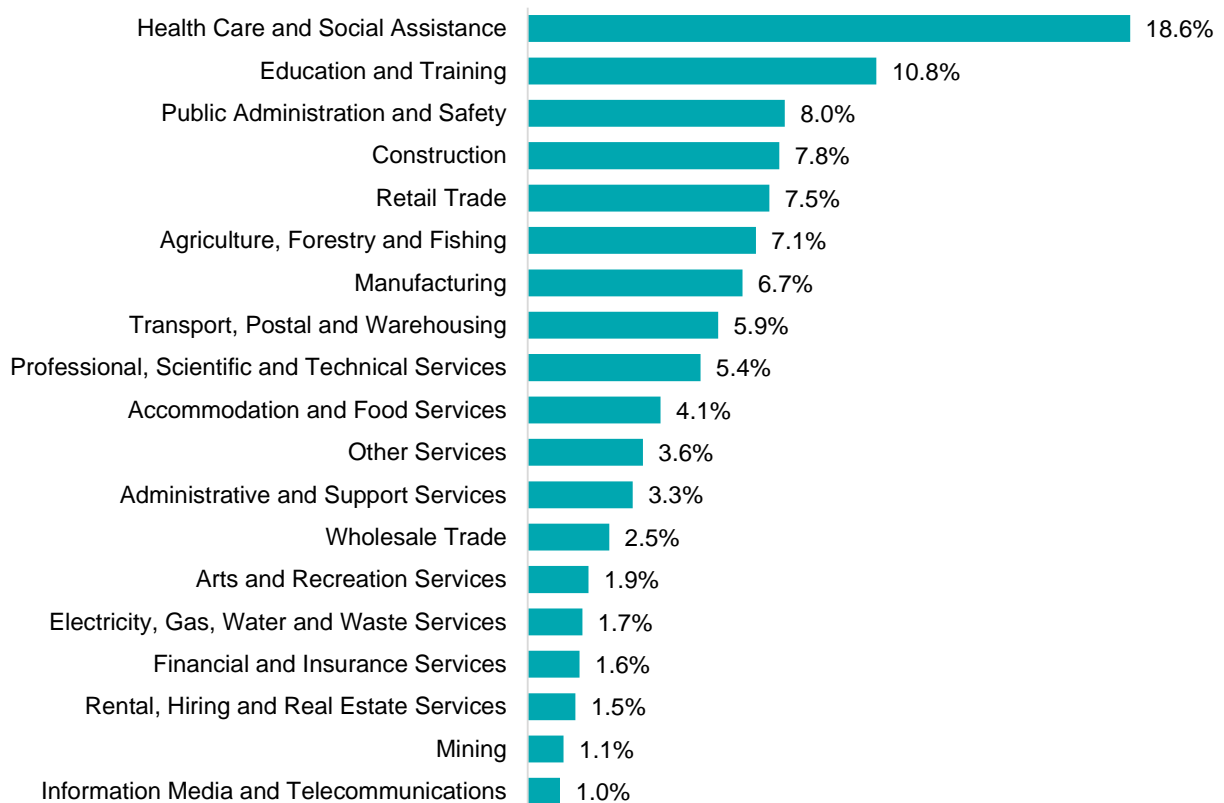
Employment characteristics by Industry

Which industries are youth (aged 15-24) employed in?



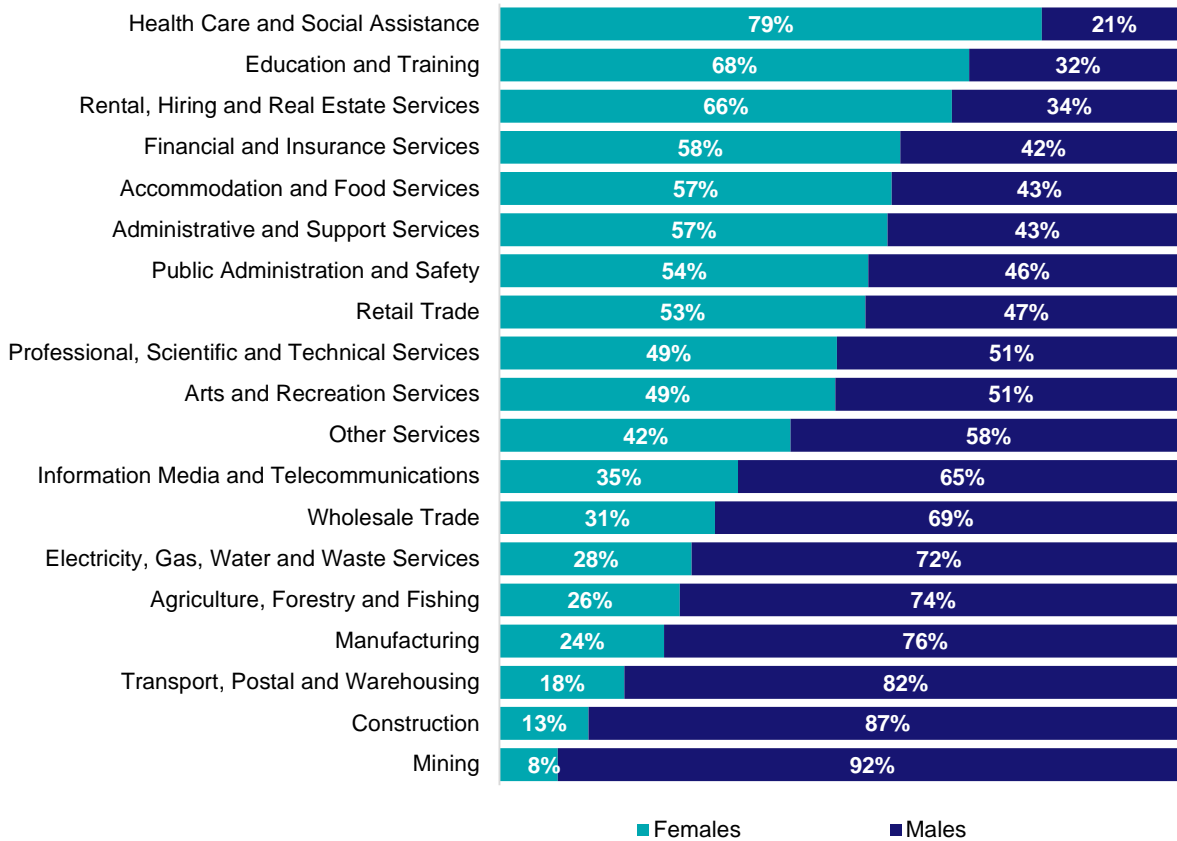
Source: ABS Census of Population and Housing, 2021.

Which industries are mature age persons (aged 55+) employed in?



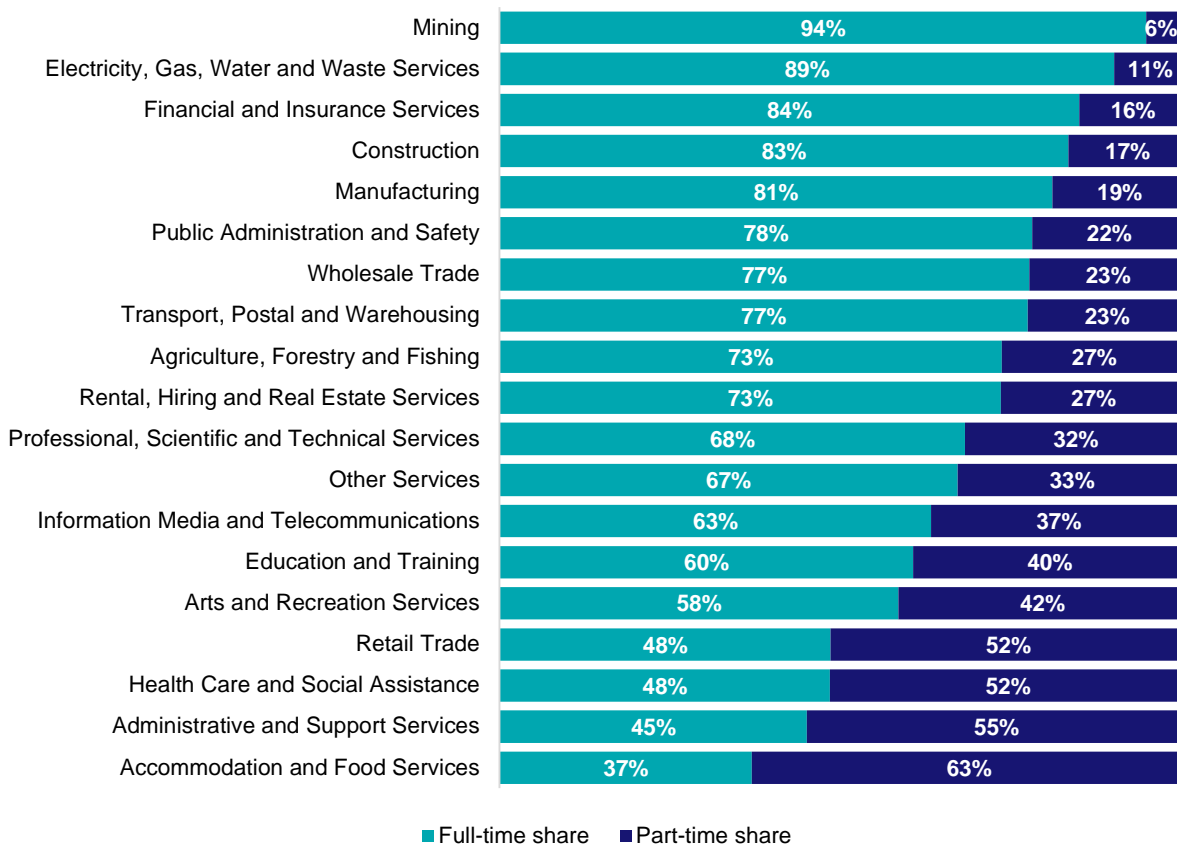
Source: ABS Census of Population and Housing, 2021.

Gender share by industry



Source: ABS Labour Force Survey, Detailed, four quarter averages, August 2024.

Full-time and part-time employment status by industry



Source: ABS Labour Force Survey, Detailed, four quarter averages, August 2024.

Appendix

Employment by industry, Tasmania, August 2024

| Industry (in order of size) | Share of emp't Aug-24 (%) | Share of emp't in Greater Hobart (%) | Share of emp't in Rest of TAS (%) | Employed ('000) | | | 1 year change | | 5 year change | | Median age * |
|---|---------------------------|--------------------------------------|-----------------------------------|-----------------|--------------|--------------|---------------|-------------|---------------|-------------|--------------|
| | | | | Aug-24 | Aug-23 | Aug-19 | ('000) | % | ('000) | % | |
| Health Care and Social Assistance | 17.2 | 48.6 | 51.4 | 48.8 | 49.1 | 40.7 | -0.3 | -0.7 | 8.1 | 19.9 | 43 |
| Construction | 9.8 | 45.8 | 54.2 | 27.6 | 24.5 | 21.6 | 3.2 | 12.9 | 6.0 | 27.7 | 38 |
| Retail Trade | 9.2 | 44.8 | 55.2 | 26.1 | 27.6 | 26.5 | -1.5 | -5.3 | -0.3 | -1.3 | 34 |
| Education and Training | 8.7 | 49.8 | 50.2 | 24.6 | 26.1 | 23.0 | -1.5 | -5.8 | 1.6 | 6.9 | 45 |
| Public Administration and Safety | 8.3 | 61.7 | 38.3 | 23.6 | 21.4 | 19.6 | 2.2 | 10.1 | 4.0 | 20.5 | 46 |
| Accommodation and Food Services | 7.8 | 53.2 | 46.8 | 22.0 | 21.2 | 21.0 | 0.8 | 3.6 | 1.0 | 4.5 | 29 |
| Manufacturing | 6.9 | 35.7 | 64.3 | 19.5 | 19.6 | 18.1 | -0.1 | -0.5 | 1.4 | 7.8 | 42 |
| Professional, Scientific and Technical Services | 6.0 | 59.5 | 40.5 | 17.1 | 18.9 | 14.6 | -1.8 | -9.3 | 2.5 | 17.4 | 42 |
| Agriculture, Forestry and Fishing | 4.8 | 19.2 | 80.8 | 13.7 | 15.6 | 13.8 | -1.9 | -12.4 | -0.1 | -0.8 | 44 |
| Transport, Postal and Warehousing | 3.7 | 31.4 | 68.6 | 10.6 | 12.6 | 10.9 | -2.1 | -16.2 | -0.3 | -2.7 | 47 |
| Other Services | 3.5 | 41.0 | 59.0 | 9.9 | 10.7 | 10.0 | -0.7 | -6.8 | 0.0 | -0.3 | 39 |
| Administrative and Support Services | 2.9 | 37.5 | 62.5 | 8.2 | 7.5 | 6.7 | 0.7 | 9.9 | 1.5 | 23.1 | 43 |
| Electricity, Gas, Water and Waste Services | 1.9 | 54.4 | 45.6 | 5.4 | 5.4 | 3.7 | 0.0 | -0.2 | 1.6 | 44.1 | 44 |
| Wholesale Trade | 1.9 | 45.1 | 54.9 | 5.3 | 5.6 | 5.8 | -0.3 | -4.6 | -0.5 | -7.9 | 44 |
| Arts and Recreation Services | 1.7 | 52.3 | 47.7 | 4.8 | 4.6 | 7.1 | 0.2 | 5.2 | -2.3 | -32.1 | 40 |
| Financial and Insurance Services | 1.6 | 67.0 | 33.0 | 4.6 | 6.2 | 4.1 | -1.5 | -24.7 | 0.5 | 13.1 | 41 |
| Rental, Hiring and Real Estate Services | 1.5 | 52.0 | 48.0 | 4.1 | 4.0 | 3.2 | 0.1 | 3.6 | 0.9 | 26.9 | 45 |
| Mining | 1.3 | 16.8 | 83.2 | 3.8 | 3.3 | 2.9 | 0.5 | 15.2 | 0.9 | 32.3 | 44 |
| Information Media and Telecommunications | 1.2 | 49.2 | 50.8 | 3.5 | 3.0 | 2.8 | 0.5 | 17.8 | 0.7 | 26.6 | 42 |
| All Industries | 100.0 | 46.7 | 53.3 | 283.3 | 286.7 | 255.9 | -3.4 | -1.2 | 27.3 | 10.7 | 41 |

Source: ABS Labour Force Survey, Detailed, August 2024, four quarter averages. *Median age is from the ABS Census of Population and Housing, 2021.