



Industry profile

South Australia

Release date: 17 October 2024

Overview

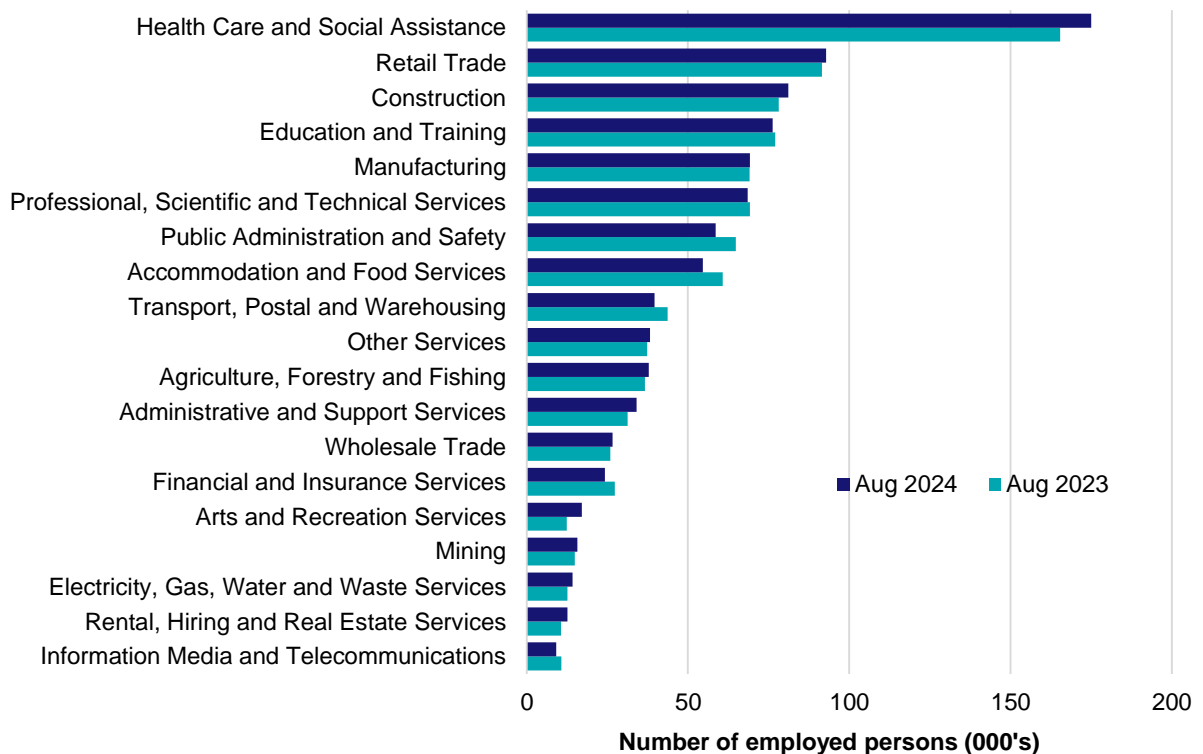
In August 2024, there were around 945,800 people employed in South Australia. The 5 largest employing industries in South Australia were Health Care and Social Assistance, Retail Trade, Construction, Education and Training and Manufacturing. Together these 5 industries accounted for 52% of all employment.

Over the year to August 2024, employment in:

- Health Care and Social Assistance rose by 5.8% to stand at 175,000
- Retail Trade rose by 1.4% to stand at 92,800
- Construction rose by 3.8% to stand at 81,100.

In Health Care and Social Assistance in South Australia, 53% of workers were employed full-time; 76% were Female; and the median age of the workforce was 42. Around 84% of employed persons in this industry were located in Greater Adelaide.

Employment by industry, August 2024 and August 2023

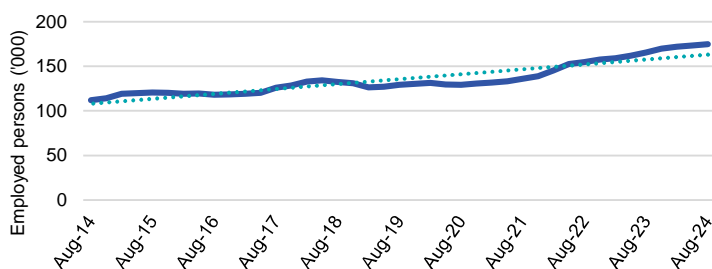


Source: ABS Labour Force Survey, Detailed, four quarter averages, August 2024. Note that total employment (four quarter averaged data) may not match data published in the Labour Market dashboards (seasonally adjusted data).

Note: For any enquiries related to the data in this report, contact RegionalWorkforceAssessment@jobsandskills.gov.au

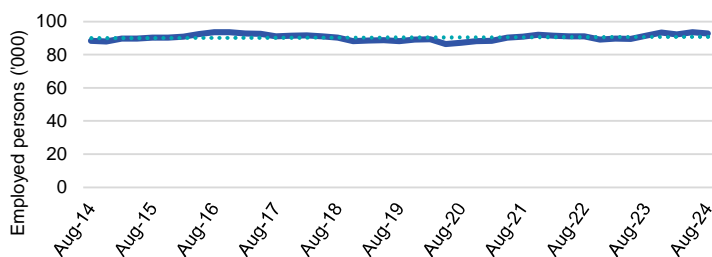
Five largest employing industries: key statistics

Health Care and Social Assistance



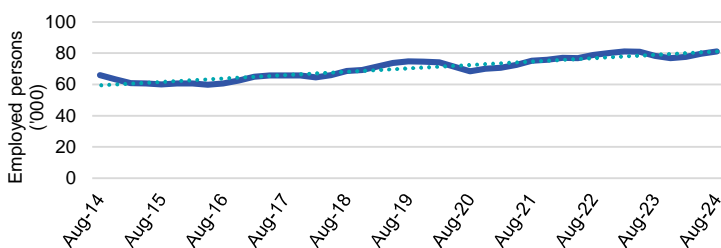
Number employed (Aug-24):	175,000
1 year employment change:	5.8%
5 year employment change:	35.5%
10 year employment change:	56.2%
Youth share of employment:	10.4%
Mature age share of employment:	18.5%

Retail Trade



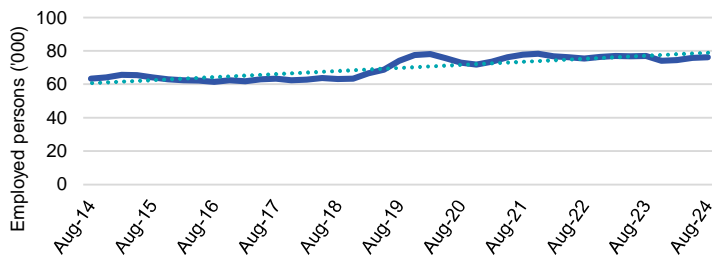
Number employed (Aug-24):	92,800
1 year employment change:	1.4%
5 year employment change:	5.2%
10 year employment change:	5.0%
Youth share of employment:	22.2%
Mature age share of employment:	7.5%

Construction



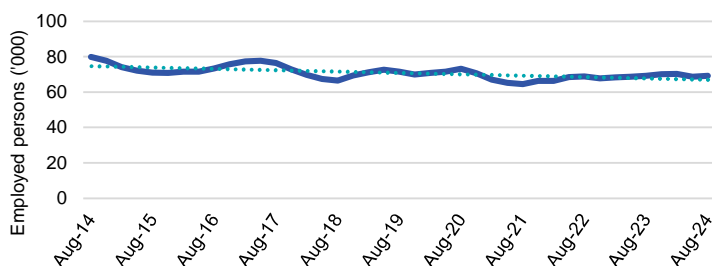
Number employed (Aug-24):	81,100
1 year employment change:	3.8%
5 year employment change:	8.5%
10 year employment change:	23.2%
Youth share of employment:	8.4%
Mature age share of employment:	7.6%

Education and Training



Number employed (Aug-24):	76,300
1 year employment change:	-1.0%
5 year employment change:	3.1%
10 year employment change:	20.4%
Youth share of employment:	5.6%
Mature age share of employment:	9.9%

Manufacturing



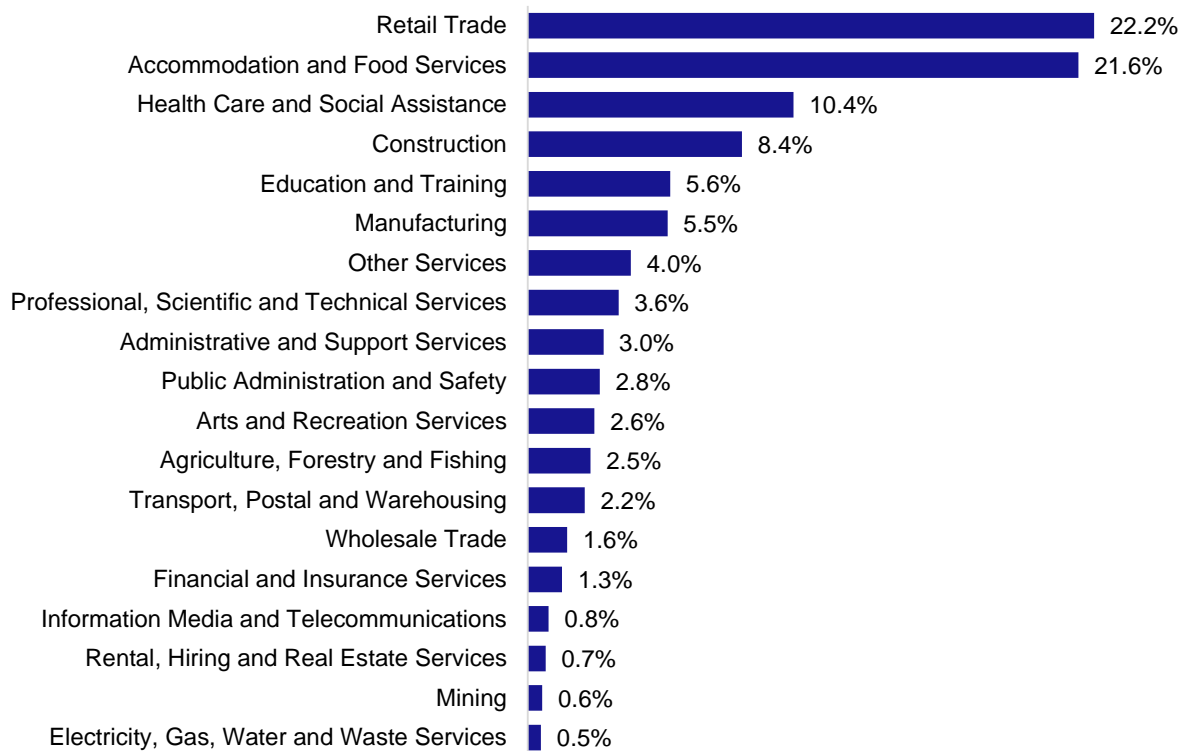
Number employed (Aug-24):	69,300
1 year employment change:	0.2%
5 year employment change:	-3.2%
10 year employment change:	-13.3%
Youth share of employment:	5.5%
Mature age share of employment:	8.1%

Source: ABS Labour Force Survey, Detailed, four quarter averages, August 2024, except youth and mature age data which are from the ABS Census of Population and Housing, 2021.

Note: In each chart, the solid line is the level of employment and the dotted line is a simple linear trend line for the 10 year period.

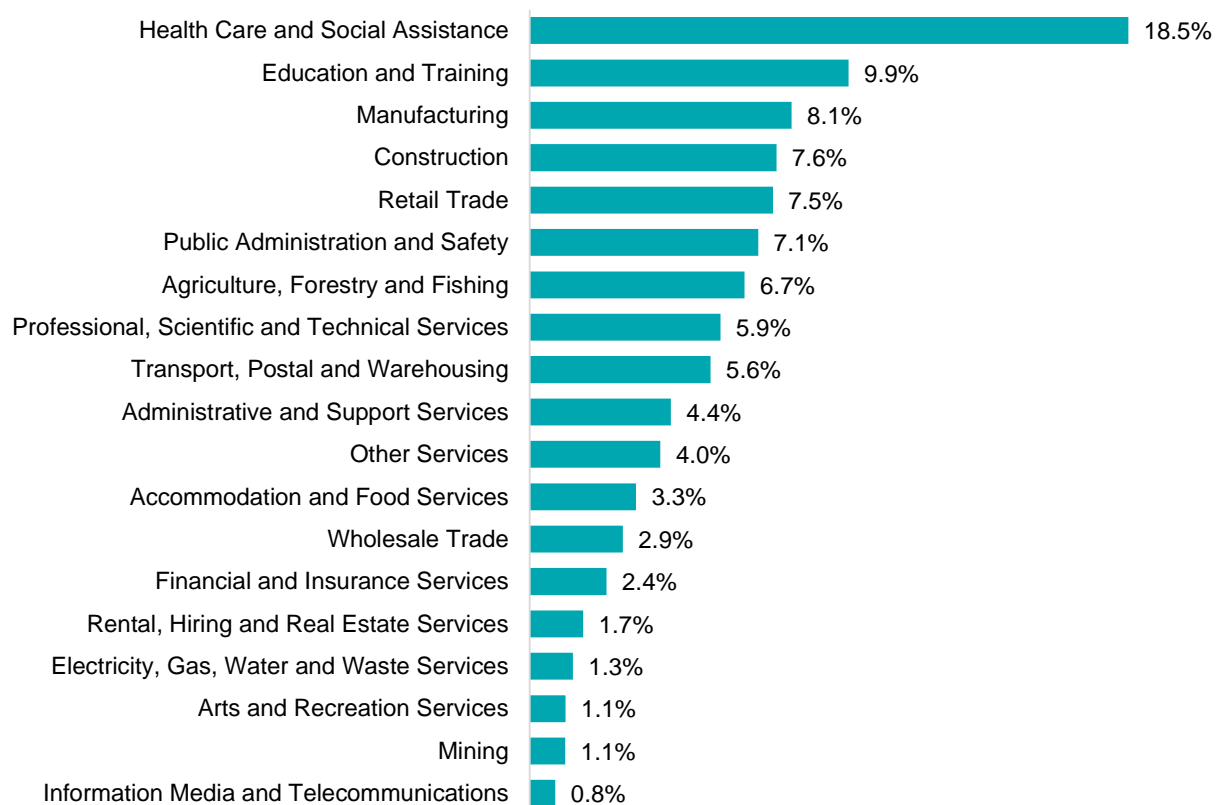
Employment characteristics by Industry

Which industries are youth (aged 15-24) employed in?



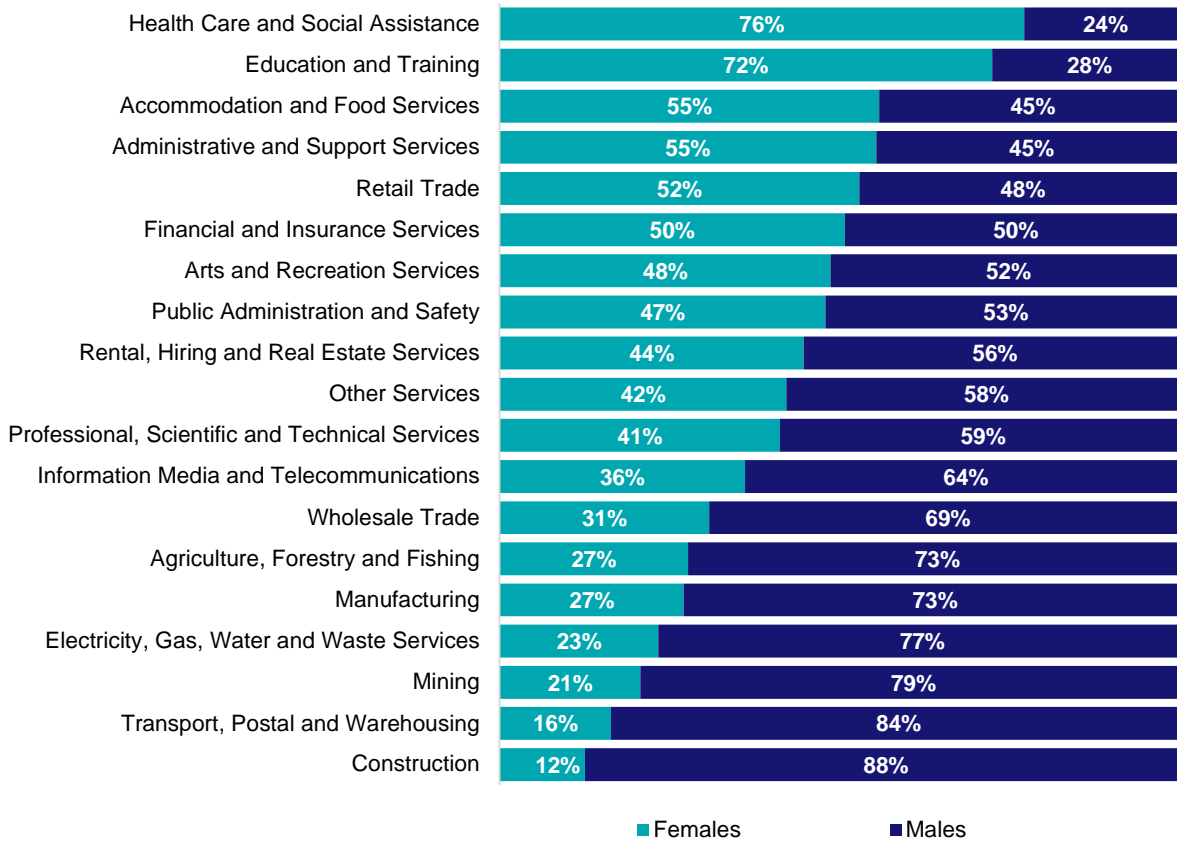
Source: ABS Census of Population and Housing, 2021.

Which industries are mature age persons (aged 55+) employed in?



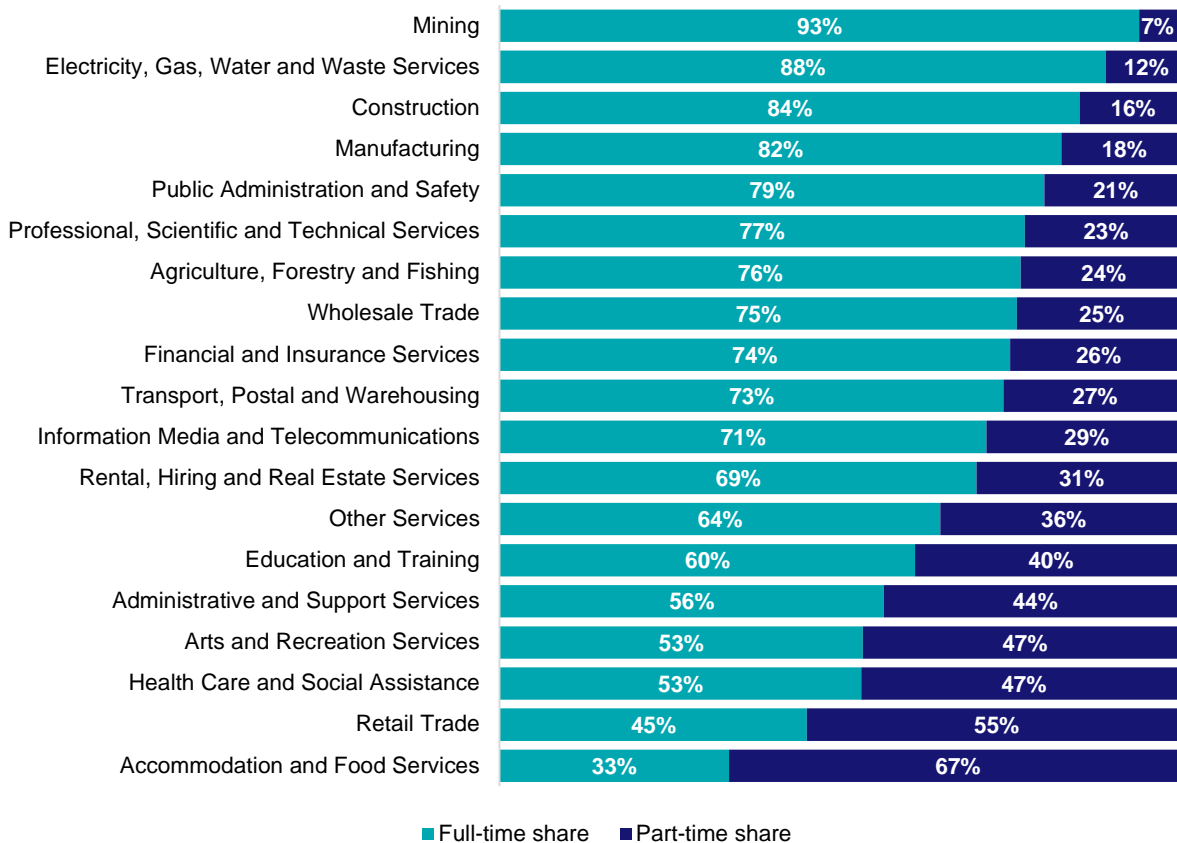
Source: ABS Census of Population and Housing, 2021.

Gender share by industry



Source: ABS Labour Force Survey, Detailed, four quarter averages, August 2024.

Full-time and part-time employment status by industry



Source: ABS Labour Force Survey, Detailed, four quarter averages, August 2024.

Appendix

Employment by industry, South Australia, August 2024

Industry (in order of size)	Share of emp't Aug-24 (%)	Share of emp't in Greater Adelaide (%)	Share of emp't in Rest of SA (%)	Employed ('000)			1 year change		5 year change		Median age *
				Aug-24	Aug-23	Aug-19	('000)	%	('000)	%	
Health Care and Social Assistance	18.5	83.9	16.1	175.0	165.4	129.2	9.6	5.8	45.8	35.5	42
Retail Trade	9.8	78.4	21.6	92.8	91.5	88.2	1.3	1.4	4.6	5.2	33
Construction	8.6	80.9	19.1	81.1	78.1	74.8	3.0	3.8	6.3	8.5	39
Education and Training	8.1	82.7	17.3	76.3	77.0	74.0	-0.7	-1.0	2.3	3.1	43
Manufacturing	7.3	78.0	22.0	69.3	69.1	71.6	0.1	0.2	-2.3	-3.2	44
Professional, Scientific and Technical Services	7.2	93.5	6.5	68.5	69.2	56.8	-0.7	-1.0	11.8	20.7	41
Public Administration and Safety	6.2	86.9	13.1	58.6	64.9	53.4	-6.3	-9.7	5.2	9.7	44
Accommodation and Food Services	5.8	81.2	18.8	54.6	60.8	60.0	-6.1	-10.1	-5.4	-9.0	26
Transport, Postal and Warehousing	4.2	77.9	22.1	39.7	43.7	38.8	-4.0	-9.3	0.9	2.3	45
Other Services	4.0	78.0	22.0	38.3	37.4	34.6	0.9	2.4	3.7	10.8	40
Agriculture, Forestry and Fishing	4.0	19.7	80.3	37.9	36.6	34.7	1.3	3.4	3.1	9.0	48
Administrative and Support Services	3.6	83.5	16.5	34.1	31.3	32.5	2.7	8.8	1.5	4.7	43
Wholesale Trade	2.8	83.1	16.9	26.6	25.9	24.5	0.7	2.6	2.1	8.5	45
Financial and Insurance Services	2.6	92.2	7.8	24.3	27.3	21.8	-3.0	-11.1	2.4	11.1	42
Arts and Recreation Services	1.8	86.0	14.0	17.1	12.4	13.0	4.7	37.7	4.0	31.0	35
Mining	1.7	56.6	43.4	15.7	14.9	12.8	0.8	5.4	2.9	23.0	41
Electricity, Gas, Water and Waste Services	1.5	81.6	18.4	14.2	12.6	13.0	1.6	12.5	1.3	9.8	43
Rental, Hiring and Real Estate Services	1.3	90.6	9.4	12.7	10.7	11.6	2.0	18.6	1.1	9.7	45
Information Media and Telecommunications	1.0	87.0	13.0	9.2	10.7	10.6	-1.6	-14.7	-1.5	-13.7	39
All Industries	100.0	80.1	19.9	945.8	939.7	855.8	6.1	0.7	90.0	10.5	41

Source: ABS Labour Force Survey, Detailed, August 2024, four quarter averages. *Median age is from the ABS Census of Population and Housing, 2021.