



Industry profile

New South Wales

Release date: 17 October 2024

Overview

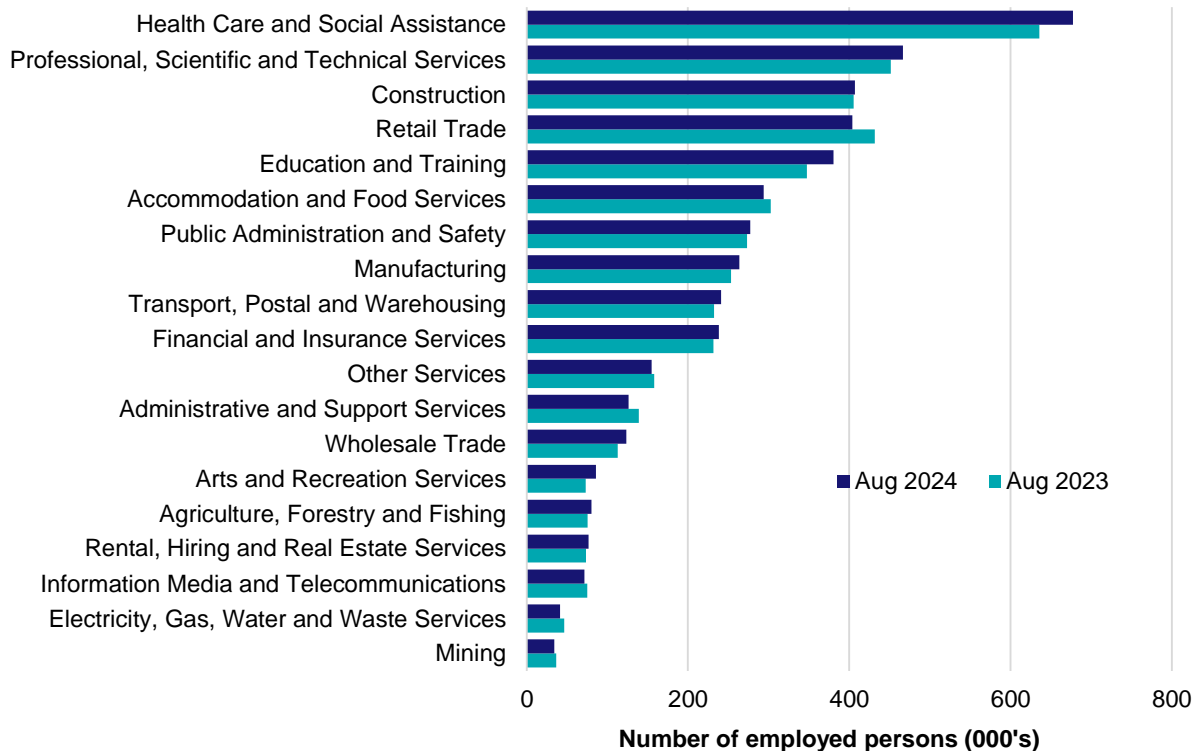
In August 2024, there were around 4,443,900 people employed in New South Wales. The 5 largest employing industries in New South Wales were Health Care and Social Assistance, Professional, Scientific and Technical Services, Construction, Retail Trade and Education and Training. Together these 5 industries accounted for 53% of all employment.

Over the year to August 2024, employment in:

- Health Care and Social Assistance rose by 6.6% to stand at 677,300
- Professional, Scientific and Technical Services rose by 3.3% to stand at 466,400
- Construction rose by 0.4% to stand at 406,900.

In Health Care and Social Assistance in New South Wales, 59% of workers were employed full-time; 76% were Female; and the median age of the workforce was 42. Around 62% of employed persons in this industry were located in Greater Sydney.

Employment by industry, August 2024 and August 2023

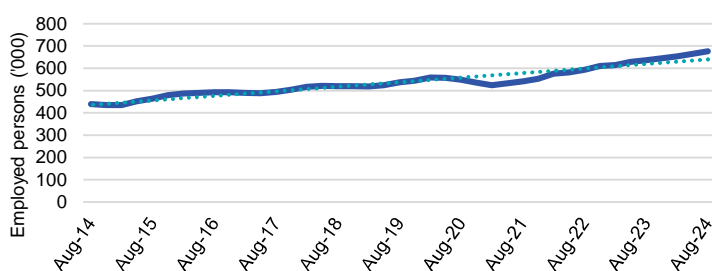


Source: ABS Labour Force Survey, Detailed, four quarter averages, August 2024. Note that total employment (four quarter averaged data) may not match data published in the Labour Market dashboards (seasonally adjusted data).

Note: For any enquiries related to the data in this report, contact RegionalWorkforceAssessment@jobsandskills.gov.au

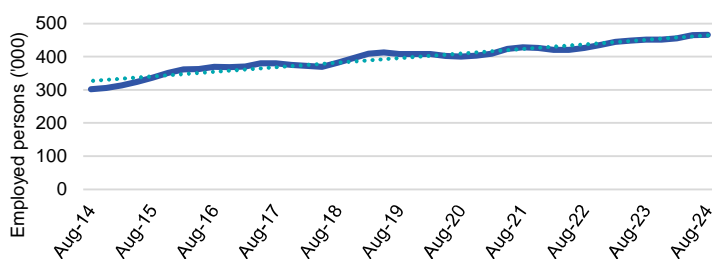
Five largest employing industries: key statistics

Health Care and Social Assistance



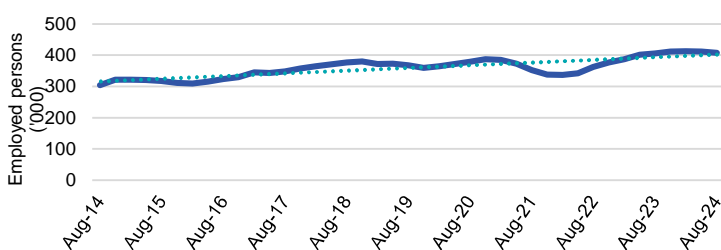
Number employed (Aug-24):	677,300
1 year employment change:	6.6%
5 year employment change:	26.2%
10 year employment change:	54.4%
Youth share of employment:	11.0%
Mature age share of employment:	17.5%

Professional, Scientific and Technical Services



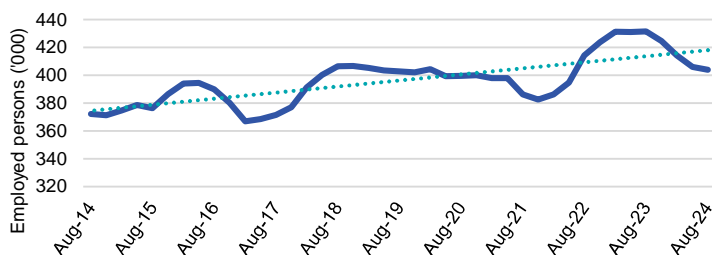
Number employed (Aug-24):	466,400
1 year employment change:	3.3%
5 year employment change:	14.4%
10 year employment change:	54.2%
Youth share of employment:	5.6%
Mature age share of employment:	8.0%

Construction



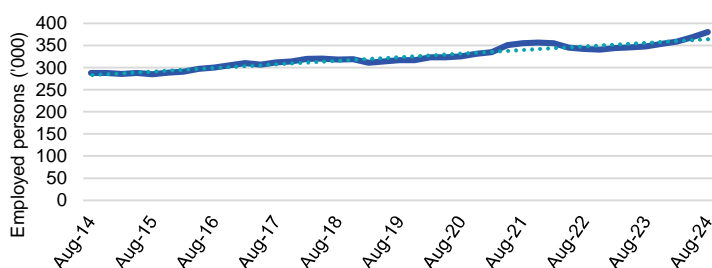
Number employed (Aug-24):	406,900
1 year employment change:	0.4%
5 year employment change:	10.7%
10 year employment change:	33.6%
Youth share of employment:	10.4%
Mature age share of employment:	7.5%

Retail Trade



Number employed (Aug-24):	403,800
1 year employment change:	-6.4%
5 year employment change:	0.3%
10 year employment change:	8.5%
Youth share of employment:	19.2%
Mature age share of employment:	7.6%

Education and Training



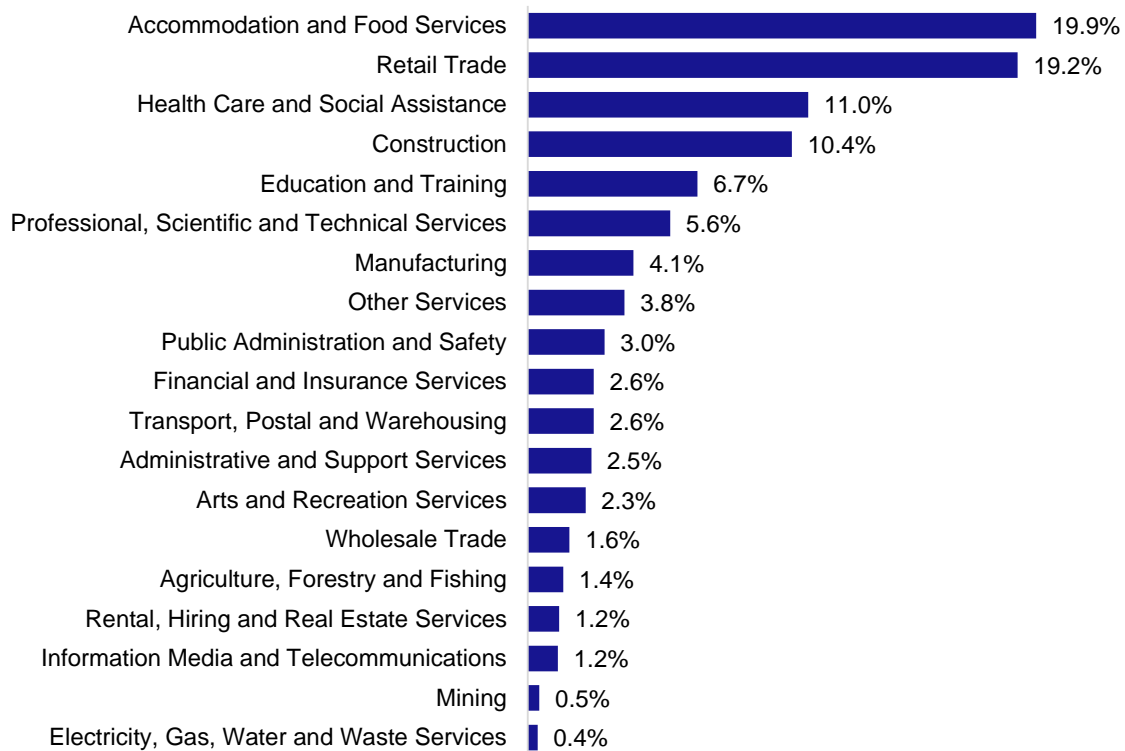
Number employed (Aug-24):	380,400
1 year employment change:	9.5%
5 year employment change:	20.2%
10 year employment change:	32.3%
Youth share of employment:	6.7%
Mature age share of employment:	10.4%

Source: ABS Labour Force Survey, Detailed, four quarter averages, August 2024, except youth and mature age data which are from the ABS Census of Population and Housing, 2021.

Note: In each chart, the solid line is the level of employment and the dotted line is a simple linear trend line for the 10 year period.

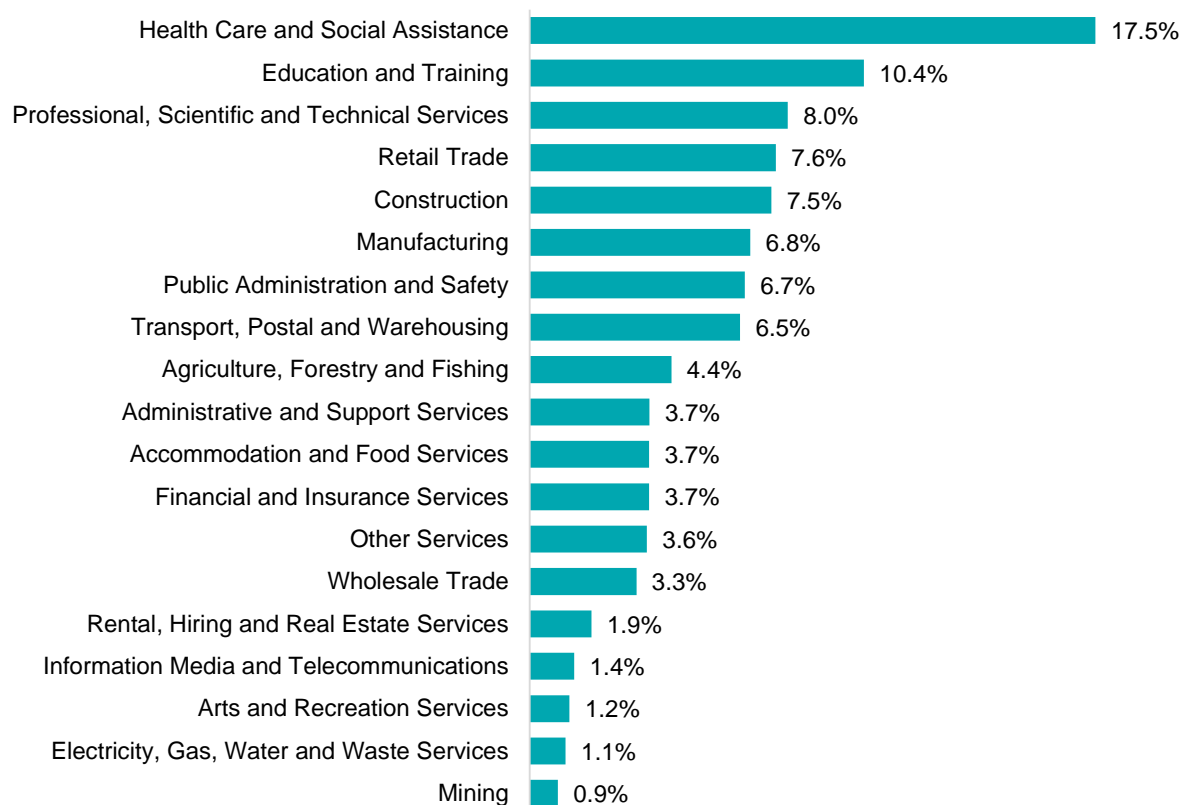
Employment characteristics by Industry

Which industries are youth (aged 15-24) employed in?



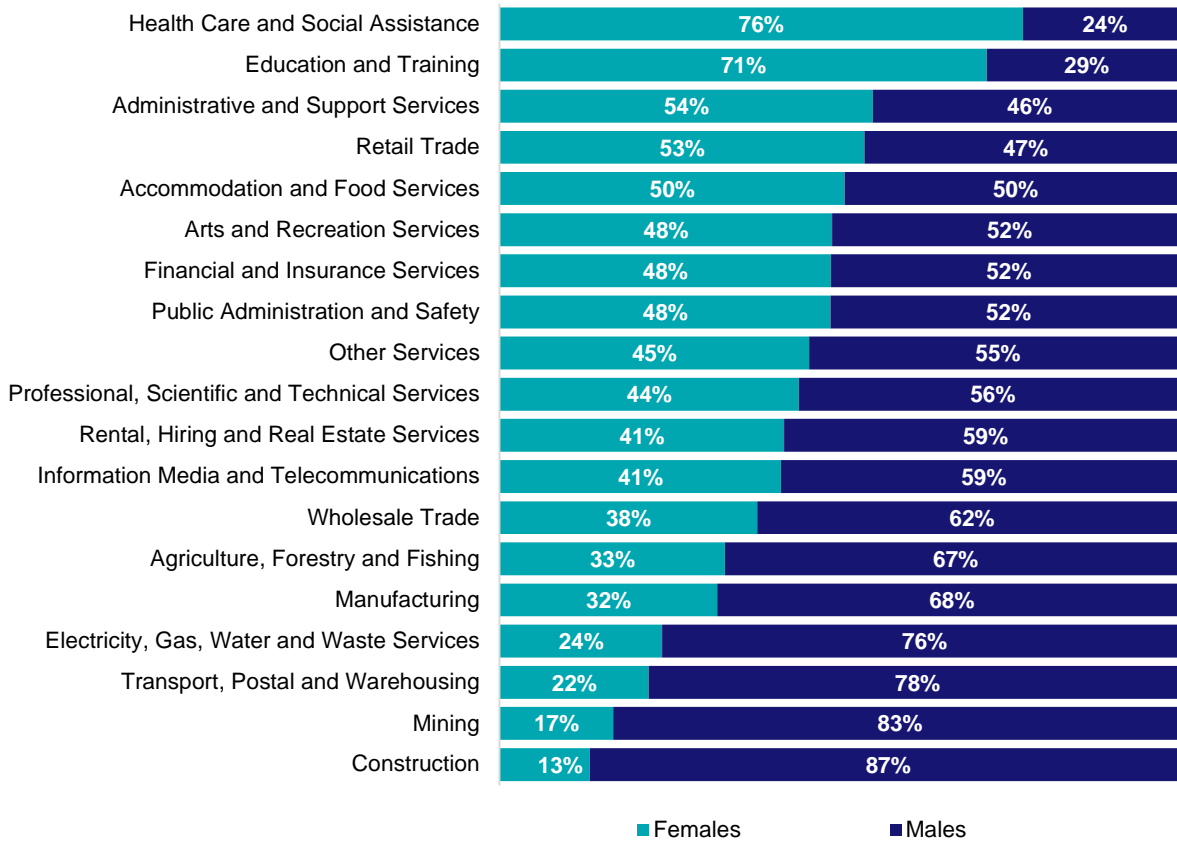
Source: ABS Census of Population and Housing, 2021.

Which industries are mature age persons (aged 55+) employed in?



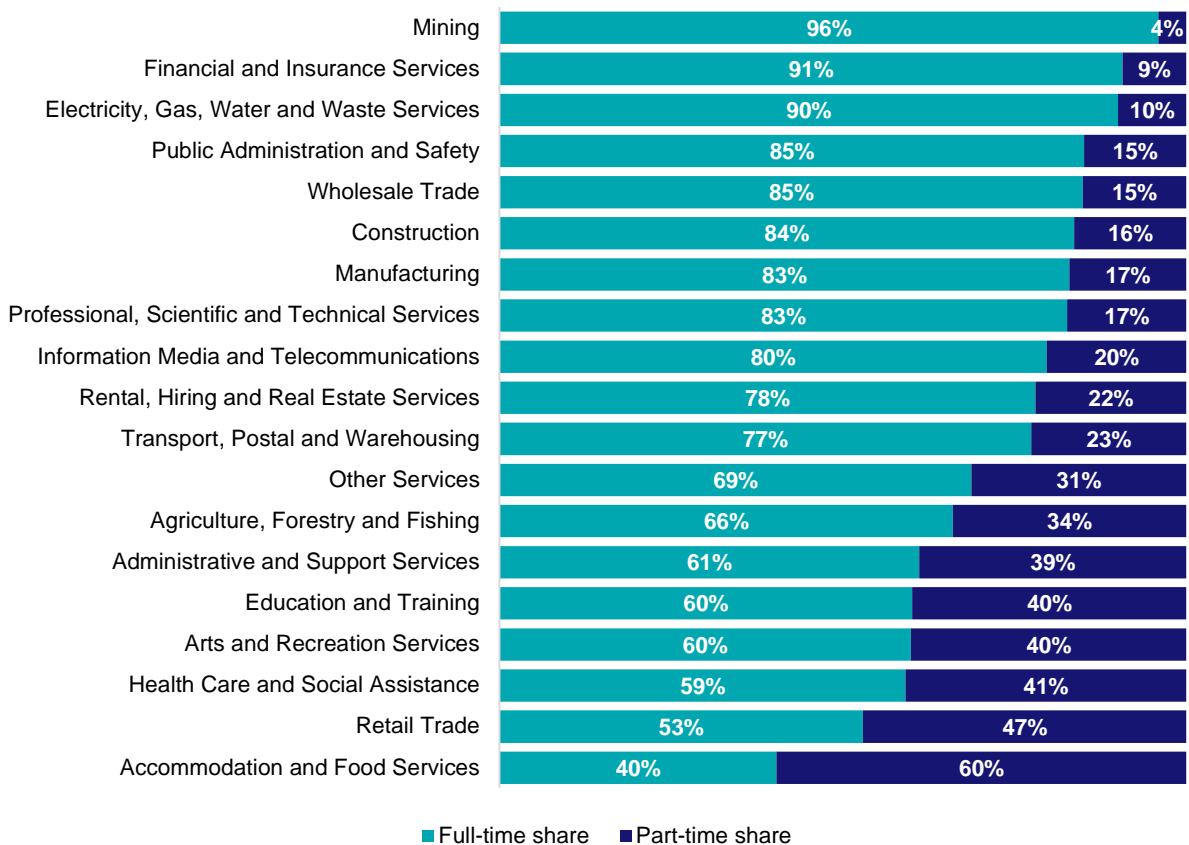
Source: ABS Census of Population and Housing, 2021.

Gender share by industry



Source: ABS Labour Force Survey, Detailed, four quarter averages, August 2024.

Full-time and part-time employment status by industry



Source: ABS Labour Force Survey, Detailed, four quarter averages, August 2024.

Appendix

Employment by industry, New South Wales, August 2024

Industry (in order of size)	Share of emp't Aug-24 (%)	Share of emp't in Greater Sydney (%)	Share of emp't in Rest of NSW (%)	Employed ('000)			1 year change		5 year change		Median age *
				Aug-24	Aug-23	Aug-19	('000)	%	('000)	%	
Health Care and Social Assistance	15.2	62.4	37.6	677.3	635.5	536.6	41.8	6.6	140.7	26.2	42
Professional, Scientific and Technical Services	10.5	81.4	18.6	466.4	451.6	407.7	14.8	3.3	58.7	14.4	39
Construction	9.2	67.1	32.9	406.9	405.3	367.4	1.6	0.4	39.5	10.7	38
Retail Trade	9.1	65.2	34.8	403.8	431.7	402.7	-27.8	-6.4	1.1	0.3	35
Education and Training	8.6	64.9	35.1	380.4	347.6	316.6	32.9	9.5	63.8	20.2	43
Accommodation and Food Services	6.6	67.5	32.5	293.8	302.7	305.2	-8.8	-2.9	-11.4	-3.7	28
Public Administration and Safety	6.2	61.0	39.0	277.1	273.1	243.8	4.0	1.5	33.2	13.6	43
Manufacturing	5.9	67.4	32.6	263.6	253.4	254.8	10.2	4.0	8.9	3.5	44
Transport, Postal and Warehousing	5.4	74.6	25.4	241.2	232.4	225.3	8.9	3.8	16.0	7.1	45
Financial and Insurance Services	5.4	88.4	11.6	238.4	231.7	189.3	6.7	2.9	49.1	25.9	40
Other Services	3.5	63.8	36.2	155.1	157.9	161.9	-2.9	-1.8	-6.9	-4.2	40
Administrative and Support Services	2.8	73.4	26.6	126.3	138.9	138.4	-12.6	-9.1	-12.1	-8.7	42
Wholesale Trade	2.8	70.7	29.3	123.7	112.9	131.8	10.9	9.6	-8.0	-6.1	43
Arts and Recreation Services	1.9	71.6	28.4	85.8	73.0	72.3	12.7	17.4	13.4	18.6	36
Agriculture, Forestry and Fishing	1.8	13.9	86.1	80.2	75.6	89.2	4.6	6.0	-9.0	-10.1	51
Rental, Hiring and Real Estate Services	1.7	74.8	25.2	76.7	73.8	68.8	2.9	3.9	7.8	11.4	41
Information Media and Telecommunications	1.6	85.8	14.2	71.6	75.2	79.4	-3.6	-4.8	-7.8	-9.8	40
Electricity, Gas, Water and Waste Services	0.9	64.0	36.0	41.3	46.6	39.7	-5.3	-11.3	1.6	4.1	44
Mining	0.8	9.4	90.6	34.3	36.8	35.9	-2.5	-6.7	-1.6	-4.4	41
All Industries	100.0	68.0	32.0	4443.9	4355.6	4066.7	88.3	2.0	377.2	9.3	40

Source: ABS Labour Force Survey, Detailed, August 2024, four quarter averages. *Median age is from the ABS Census of Population and Housing, 2021.