



Industry profile

Australian Capital Territory

Release date: 17 October 2024

Overview

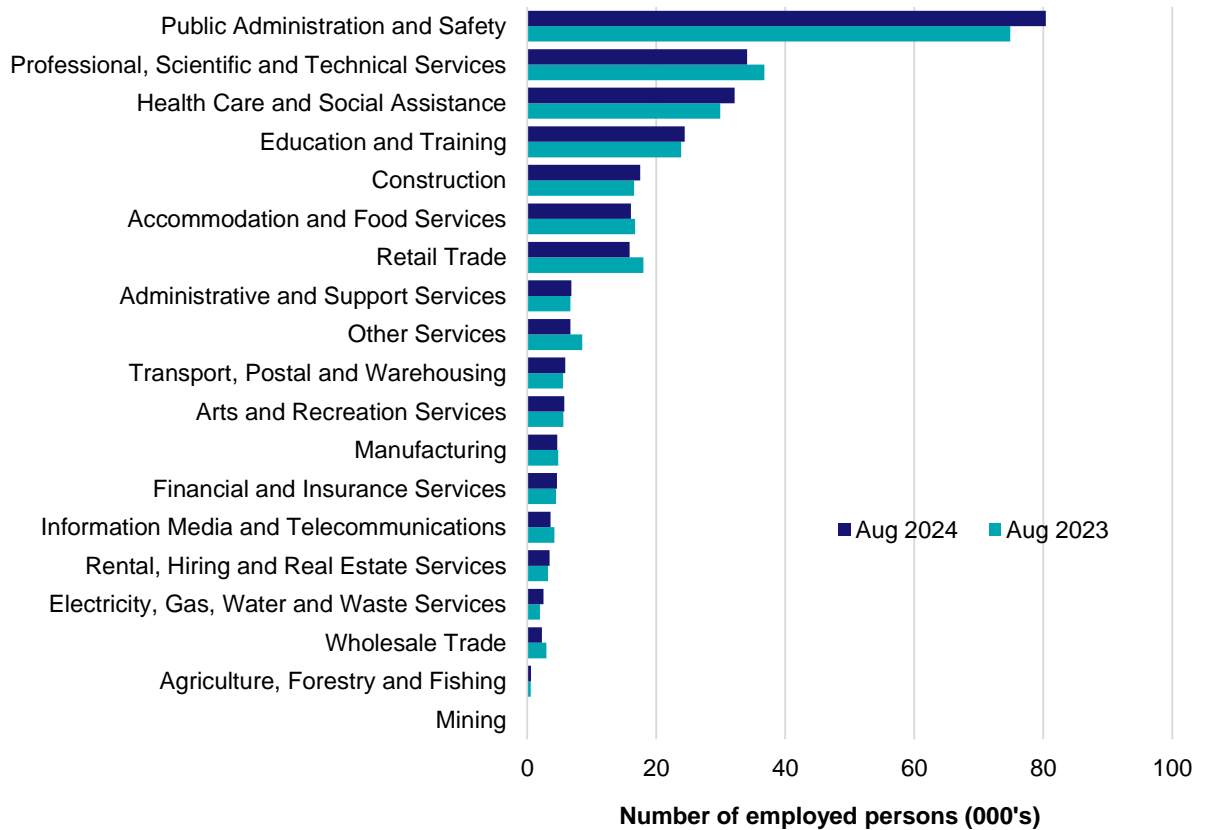
In August 2024, there were around 268,000 people employed in Australian Capital Territory. The 5 largest employing industries in Australian Capital Territory were Public Administration and Safety, Professional, Scientific and Technical Services, Health Care and Social Assistance, Education and Training and Construction. Together these 5 industries accounted for 70% of all employment.

Over the year to August 2024, employment in:

- Public Administration and Safety rose by 7.4% to stand at 80,400
- Professional, Scientific and Technical Services fell by 7.3% to stand at 34,100
- Health Care and Social Assistance rose by 7.4% to stand at 32,200.

In Public Administration and Safety in Australian Capital Territory, 90% of workers were employed full-time; 54% were Female; and the median age of the workforce was 41.

Employment by industry, August 2024 and August 2023

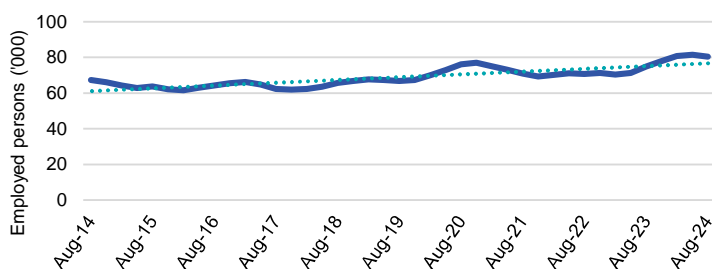


Source: ABS Labour Force Survey, Detailed, four quarter averages, August 2024. Note that total employment (four quarter averaged data) may not match data published in the Labour Market dashboards (seasonally adjusted data).

Note: For any enquiries related to the data in this report, contact RegionalWorkforceAssessment@jobsandskills.gov.au

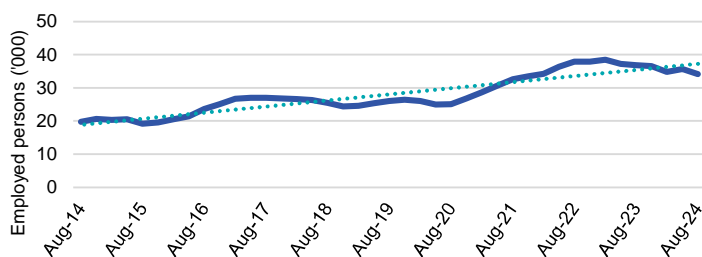
Five largest employing industries: key statistics

Public Administration and Safety



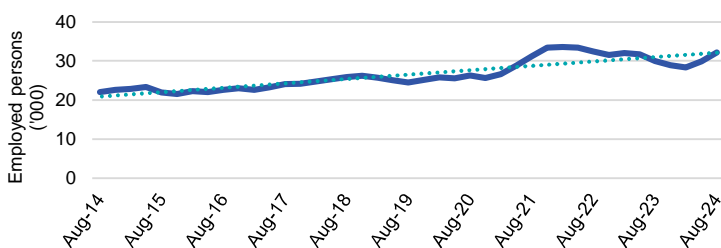
Number employed (Aug-24):	80,400
1 year employment change:	7.4%
5 year employment change:	20.6%
10 year employment change:	19.5%
Youth share of employment:	14.0%
Mature age share of employment:	29.9%

Professional, Scientific and Technical Services



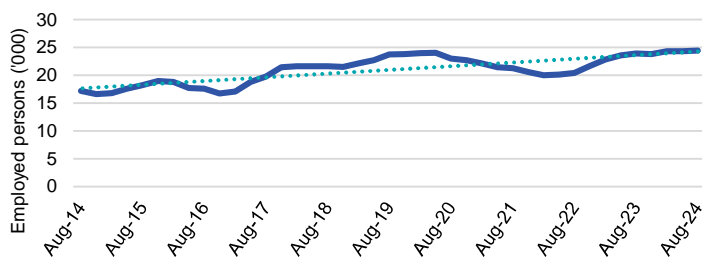
Number employed (Aug-24):	34,100
1 year employment change:	-7.3%
5 year employment change:	31.3%
10 year employment change:	72.8%
Youth share of employment:	7.4%
Mature age share of employment:	11.4%

Health Care and Social Assistance



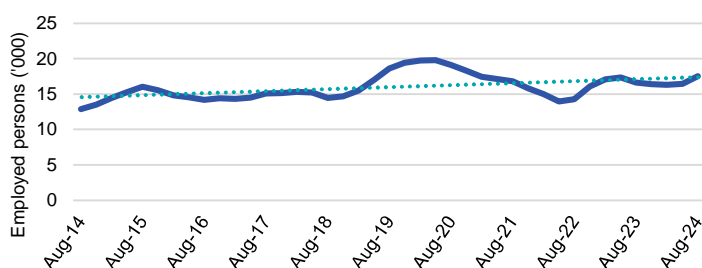
Number employed (Aug-24):	32,200
1 year employment change:	7.4%
5 year employment change:	31.3%
10 year employment change:	46.0%
Youth share of employment:	9.3%
Mature age share of employment:	13.2%

Education and Training



Number employed (Aug-24):	24,500
1 year employment change:	2.4%
5 year employment change:	3.1%
10 year employment change:	42.4%
Youth share of employment:	8.6%
Mature age share of employment:	11.4%

Construction



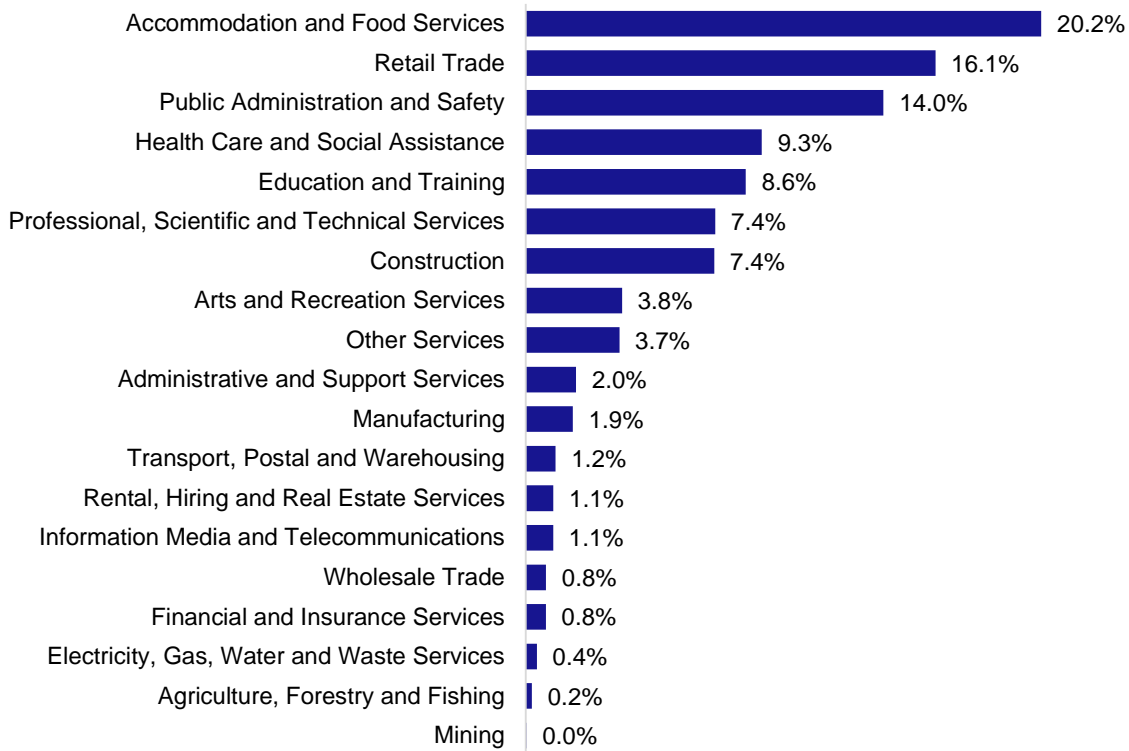
Number employed (Aug-24):	17,500
1 year employment change:	5.5%
5 year employment change:	-5.7%
10 year employment change:	35.8%
Youth share of employment:	7.4%
Mature age share of employment:	5.8%

Source: ABS Labour Force Survey, Detailed, four quarter averages, August 2024, except youth and mature age data which are from the ABS Census of Population and Housing, 2021.

Note: In each chart, the solid line is the level of employment and the dotted line is a simple linear trend line for the 10 year period.

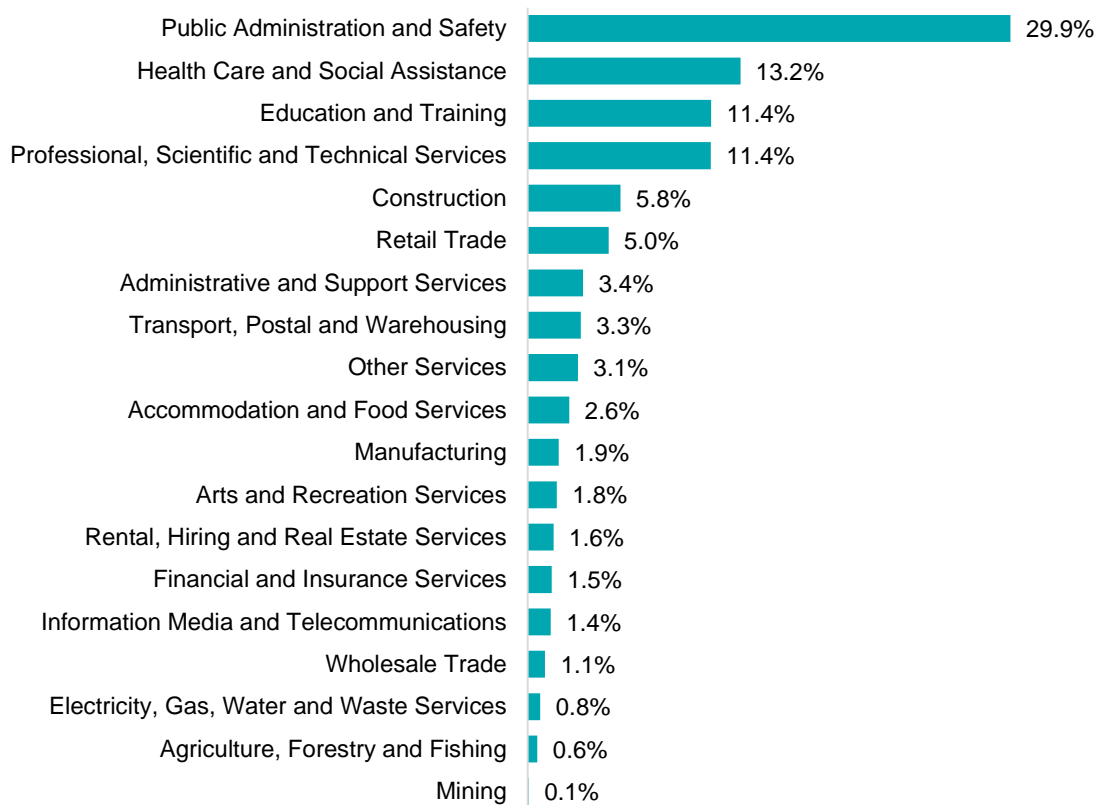
Employment characteristics by Industry

Which industries are youth (aged 15-24) employed in?



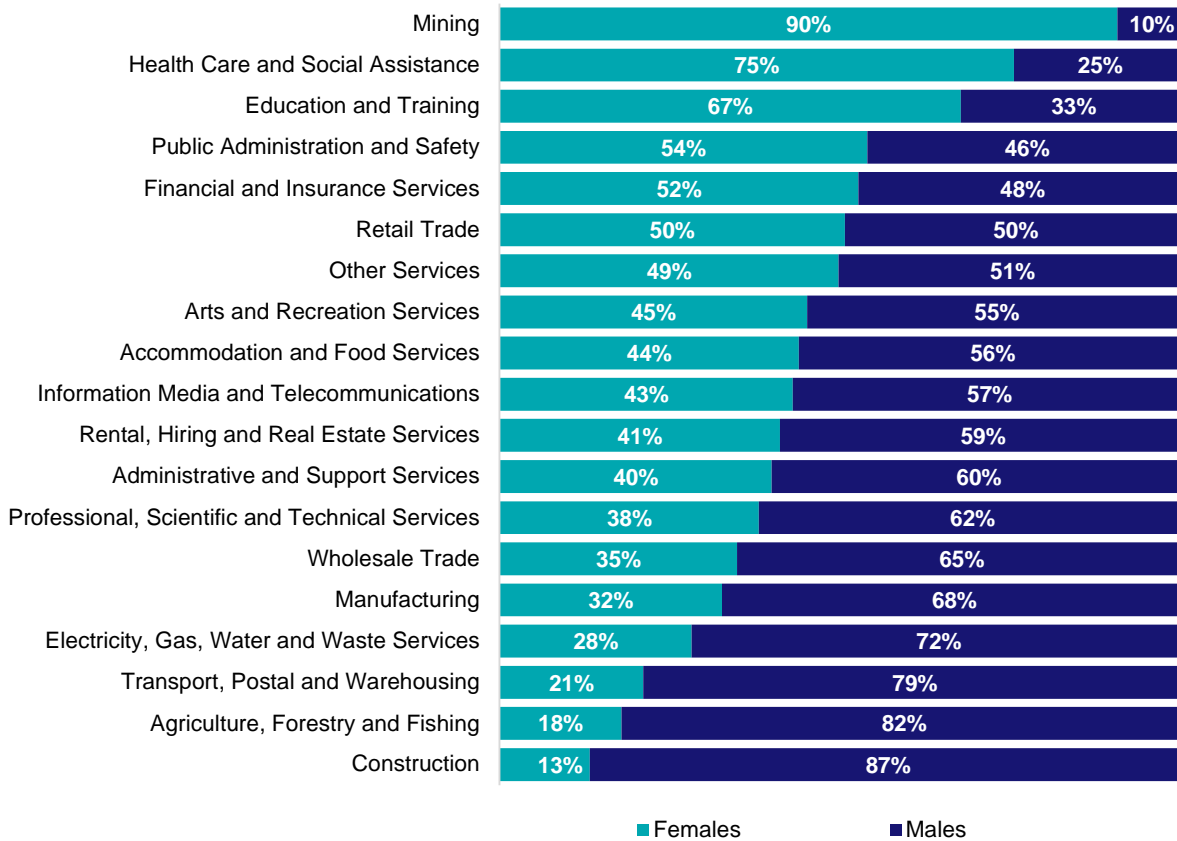
Source: ABS Census of Population and Housing, 2021.

Which industries are mature age persons (aged 55+) employed in?



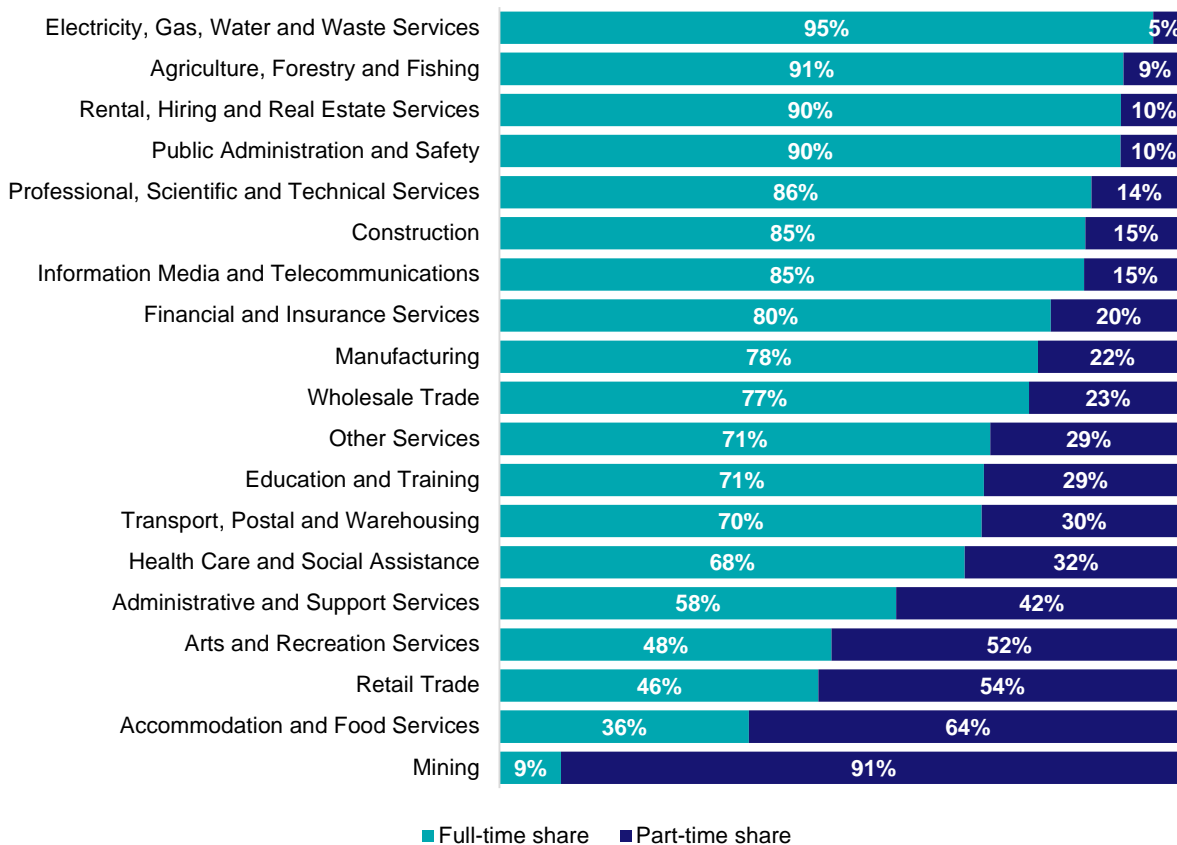
Source: ABS Census of Population and Housing, 2021.

Gender share by industry



Source: ABS Labour Force Survey, Detailed, four quarter averages, August 2024.

Full-time and part-time employment status by industry



Source: ABS Labour Force Survey, Detailed, four quarter averages, August 2024.

Appendix

Employment by industry, Australian Capital Territory, August 2024

Industry (in order of size)	Share of emp't Aug-24 (%)	Employed ('000)			1 year change		5 year change		Median age *
		Aug-24	Aug-23	Aug-19	('000)	%	('000)	%	
Public Administration and Safety	30.0	80.4	74.9	66.7	5.5	7.4	13.7	20.6	41
Professional, Scientific and Technical Services	12.7	34.1	36.8	26.0	-2.7	-7.3	8.1	31.3	38
Health Care and Social Assistance	12.0	32.2	30.0	24.5	2.2	7.4	7.7	31.3	38
Education and Training	9.1	24.5	23.9	23.7	0.6	2.4	0.7	3.1	40
Construction	6.5	17.5	16.6	18.6	0.9	5.5	-1.1	-5.7	35
Accommodation and Food Services	6.0	16.1	16.8	13.8	-0.7	-3.9	2.3	16.4	25
Retail Trade	5.9	15.9	18.0	16.2	-2.1	-11.7	-0.3	-1.8	28
Administrative and Support Services	2.6	6.8	6.7	8.4	0.1	1.8	-1.6	-18.8	39
Other Services	2.5	6.7	8.6	8.6	-1.8	-21.3	-1.9	-21.6	36
Transport, Postal and Warehousing	2.2	5.9	5.6	6.5	0.4	6.3	-0.6	-9.2	41
Arts and Recreation Services	2.1	5.8	5.6	4.2	0.1	2.6	1.5	35.4	32
Manufacturing	1.8	4.7	4.8	4.1	-0.1	-2.7	0.6	13.9	38
Financial and Insurance Services	1.7	4.7	4.5	3.3	0.2	4.0	1.4	42.1	39
Information Media and Telecommunications	1.4	3.7	4.2	3.5	-0.6	-13.9	0.2	5.2	39
Rental, Hiring and Real Estate Services	1.3	3.5	3.2	2.7	0.2	7.3	0.8	28.7	38
Electricity, Gas, Water and Waste Services	0.9	2.5	2.0	1.4	0.5	26.0	1.2	83.0	39
Wholesale Trade	0.9	2.3	3.0	2.9	-0.7	-23.1	-0.6	-21.5	40
Agriculture, Forestry and Fishing	0.2	0.6	0.6	0.3	0.1	10.5	0.3	108.2	41
Mining	0.0	0.1	0.1	0.0	0.0	32.1	0.1	NA	43
All Industries	100.0	268.0	265.8	235.6	2.2	0.8	32.5	13.8	38

Source: ABS Labour Force Survey, Detailed, four quarter averages, August 2024. *Median age is from the ABS Census of Population and Housing, 2021.