



# Industry profile

## Australian Capital Territory

Release date: 17 October 2024

### Overview

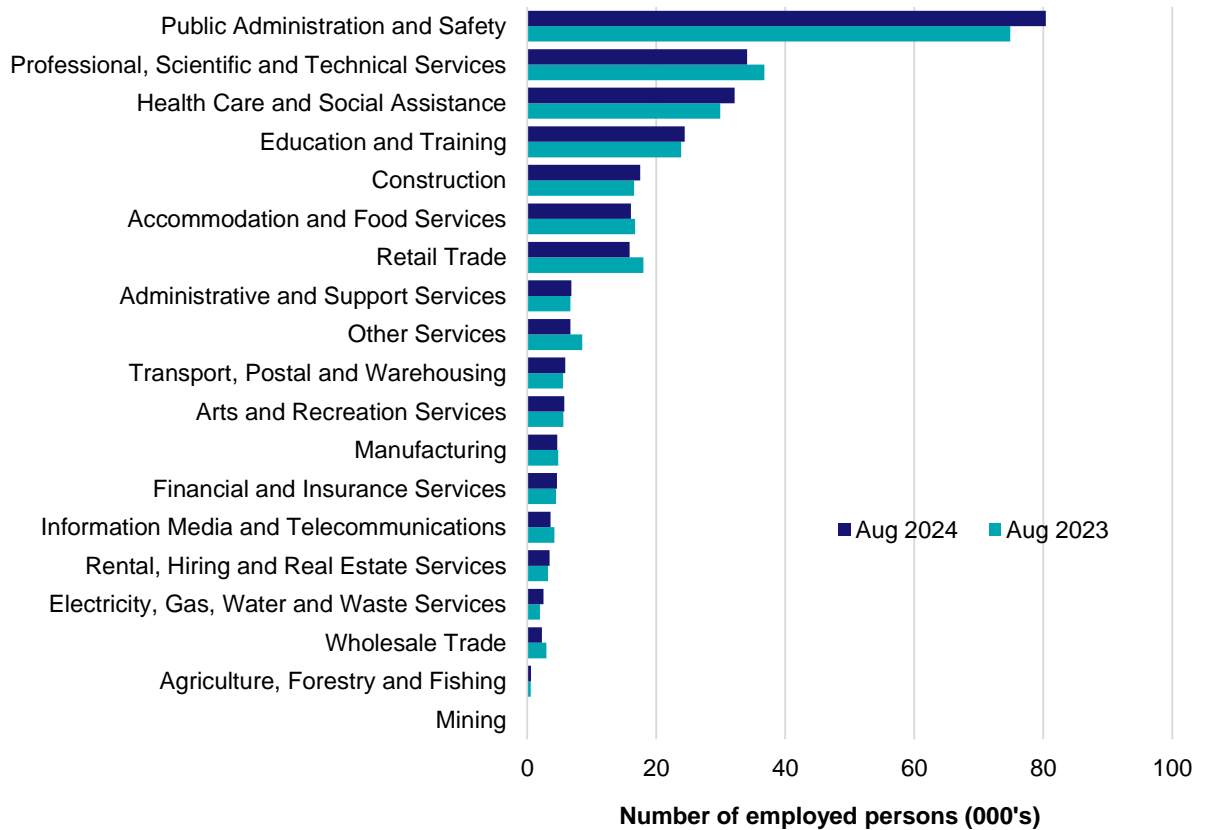
In August 2024, there were around 268,000 people employed in Australian Capital Territory. The 5 largest employing industries in Australian Capital Territory were Public Administration and Safety, Professional, Scientific and Technical Services, Health Care and Social Assistance, Education and Training and Construction. Together these 5 industries accounted for 70% of all employment.

Over the year to August 2024, employment in:

- Public Administration and Safety rose by 7.4% to stand at 80,400
- Professional, Scientific and Technical Services fell by 7.3% to stand at 34,100
- Health Care and Social Assistance rose by 7.4% to stand at 32,200.

In Public Administration and Safety in Australian Capital Territory, 90% of workers were employed full-time; 54% were Female; and the median age of the workforce was 41.

### Employment by industry, August 2024 and August 2023

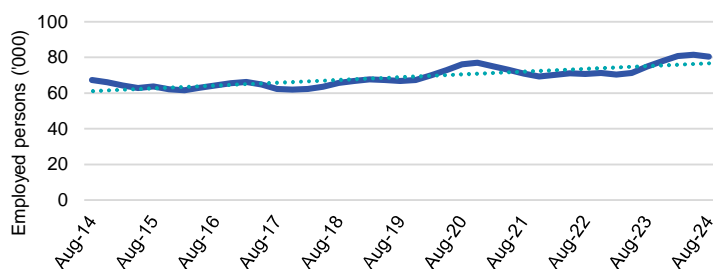


Source: ABS Labour Force Survey, Detailed, four quarter averages, August 2024. Note that total employment (four quarter averaged data) may not match data published in the Labour Market dashboards (seasonally adjusted data).

Note: For any enquiries related to the data in this report, contact [RegionalWorkforceAssessment@jobsandskills.gov.au](mailto:RegionalWorkforceAssessment@jobsandskills.gov.au)

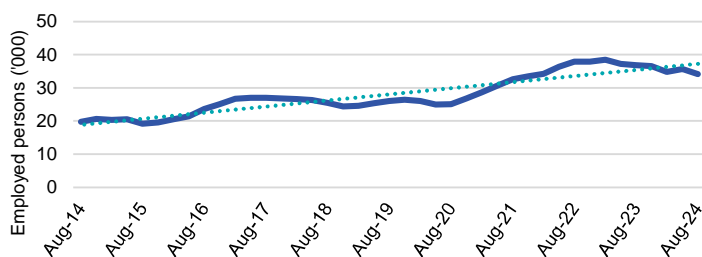
## Five largest employing industries: key statistics

### Public Administration and Safety



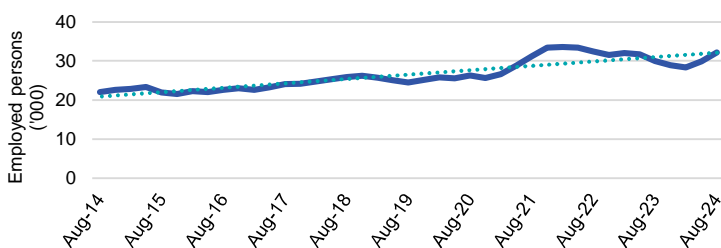
|                                 |        |
|---------------------------------|--------|
| Number employed (Aug-24):       | 80,400 |
| 1 year employment change:       | 7.4%   |
| 5 year employment change:       | 20.6%  |
| 10 year employment change:      | 19.5%  |
| Youth share of employment:      | 14.0%  |
| Mature age share of employment: | 29.9%  |

### Professional, Scientific and Technical Services



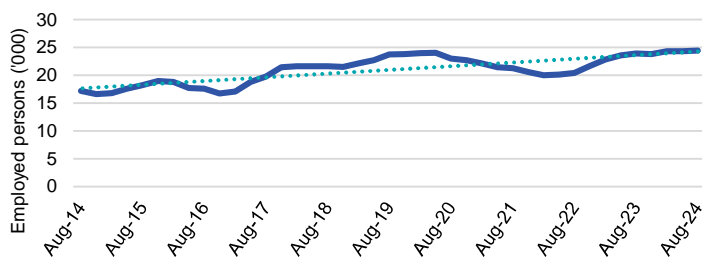
|                                 |        |
|---------------------------------|--------|
| Number employed (Aug-24):       | 34,100 |
| 1 year employment change:       | -7.3%  |
| 5 year employment change:       | 31.3%  |
| 10 year employment change:      | 72.8%  |
| Youth share of employment:      | 7.4%   |
| Mature age share of employment: | 11.4%  |

### Health Care and Social Assistance



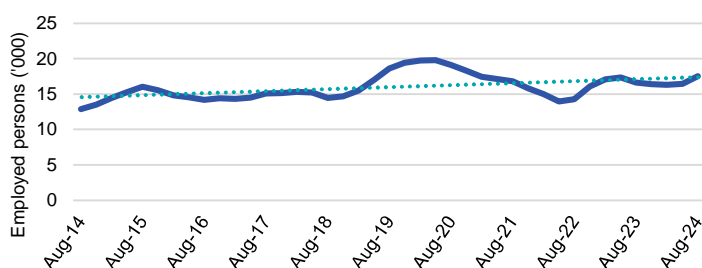
|                                 |        |
|---------------------------------|--------|
| Number employed (Aug-24):       | 32,200 |
| 1 year employment change:       | 7.4%   |
| 5 year employment change:       | 31.3%  |
| 10 year employment change:      | 46.0%  |
| Youth share of employment:      | 9.3%   |
| Mature age share of employment: | 13.2%  |

### Education and Training



|                                 |        |
|---------------------------------|--------|
| Number employed (Aug-24):       | 24,500 |
| 1 year employment change:       | 2.4%   |
| 5 year employment change:       | 3.1%   |
| 10 year employment change:      | 42.4%  |
| Youth share of employment:      | 8.6%   |
| Mature age share of employment: | 11.4%  |

### Construction



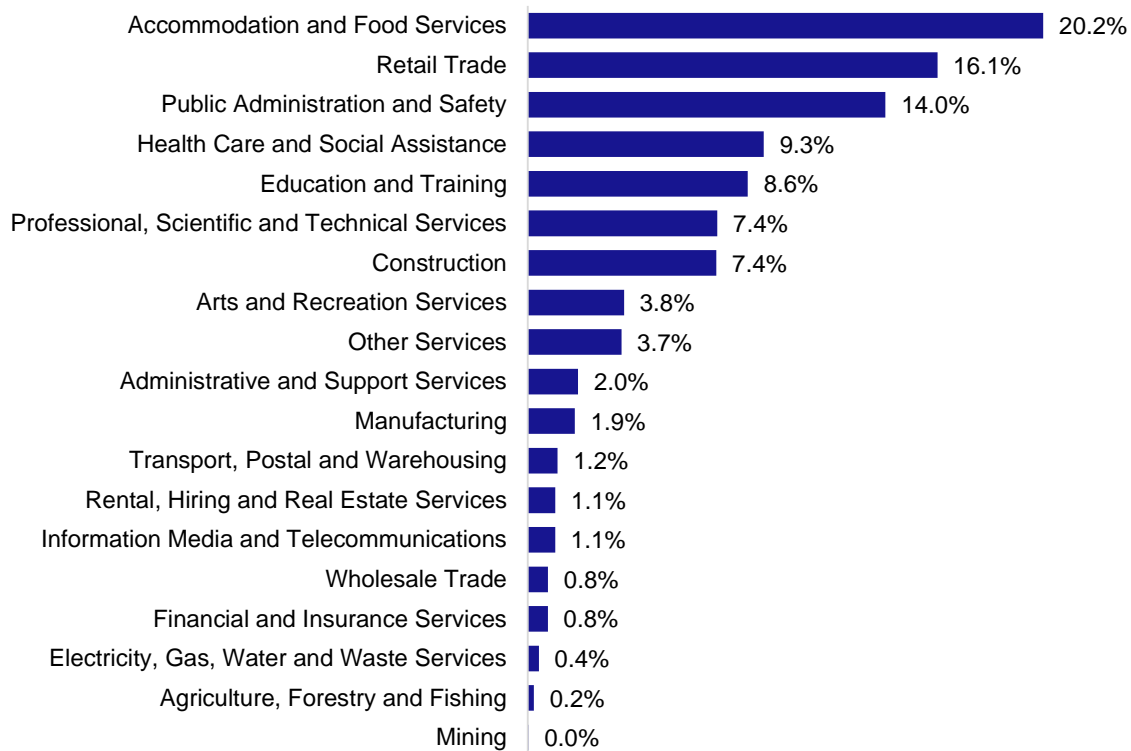
|                                 |        |
|---------------------------------|--------|
| Number employed (Aug-24):       | 17,500 |
| 1 year employment change:       | 5.5%   |
| 5 year employment change:       | -5.7%  |
| 10 year employment change:      | 35.8%  |
| Youth share of employment:      | 7.4%   |
| Mature age share of employment: | 5.8%   |

Source: ABS Labour Force Survey, Detailed, four quarter averages, August 2024, except youth and mature age data which are from the ABS Census of Population and Housing, 2021.

Note: In each chart, the solid line is the level of employment and the dotted line is a simple linear trend line for the 10 year period.

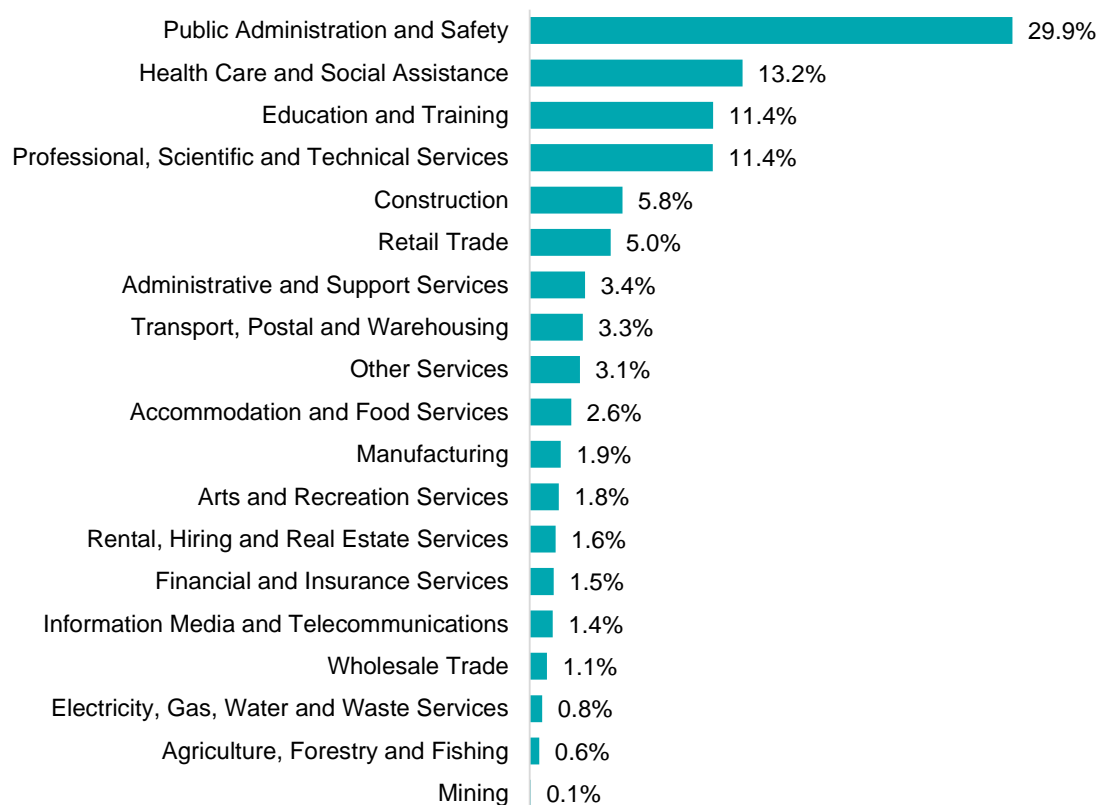
## Employment characteristics by Industry

### Which industries are youth (aged 15-24) employed in?



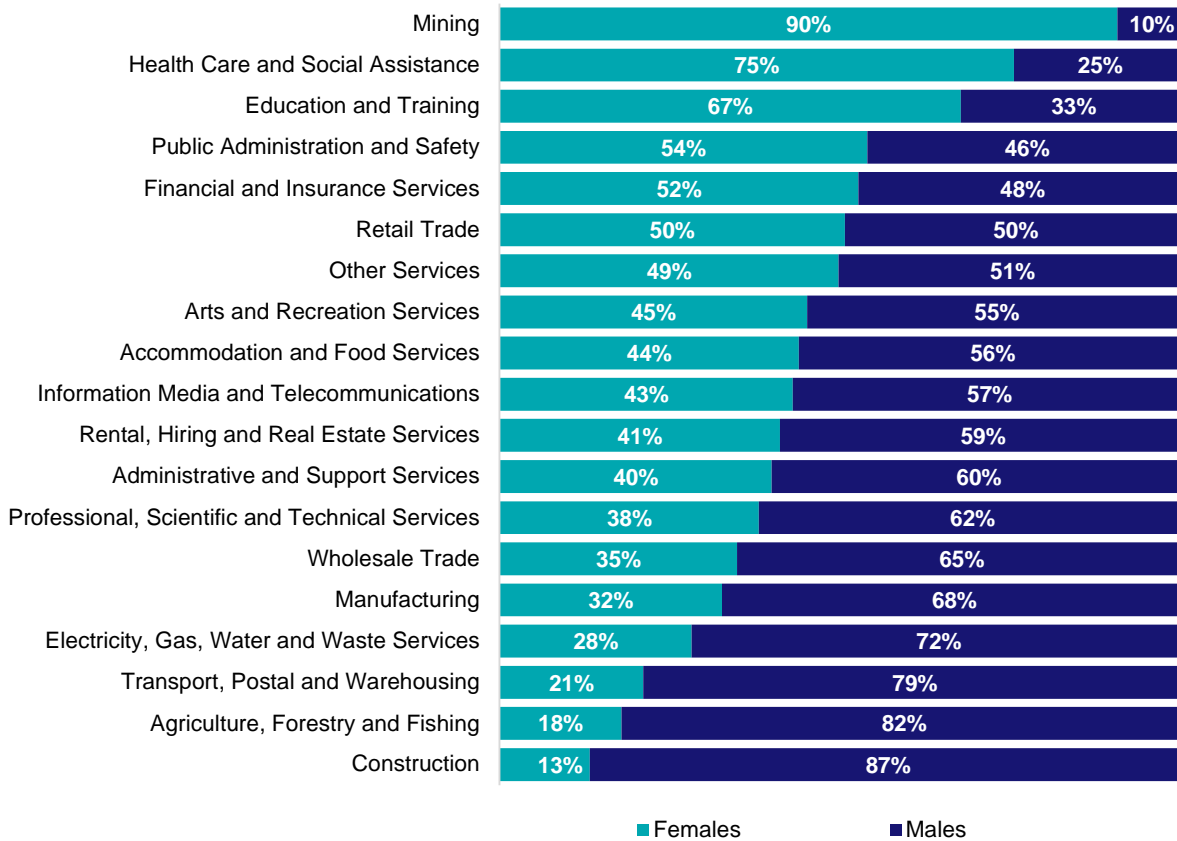
Source: ABS Census of Population and Housing, 2021.

### Which industries are mature age persons (aged 55+) employed in?



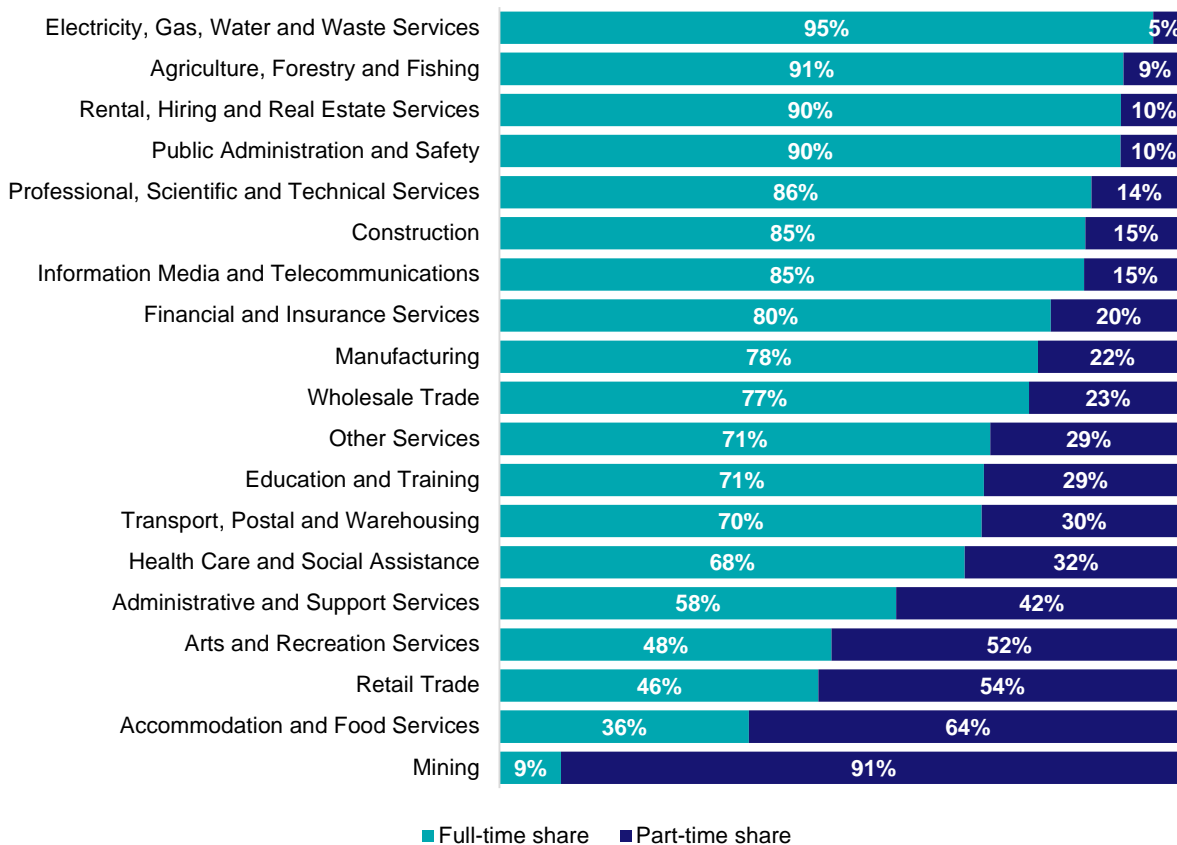
Source: ABS Census of Population and Housing, 2021.

## Gender share by industry



Source: ABS Labour Force Survey, Detailed, four quarter averages, August 2024.

## Full-time and part-time employment status by industry



Source: ABS Labour Force Survey, Detailed, four quarter averages, August 2024.

## Appendix

### Employment by industry, Australian Capital Territory, August 2024

| Industry (in order of size)                     | Share of emp't<br>Aug-24 (%) | Employed ('000) |              |              | 1 year change |            | 5 year change |             | Median age * |
|---|------------------------------|-----------------|--------------|--------------|---------------|------------|---------------|-------------|--------------|
|   |                              | Aug-24          | Aug-23       | Aug-19       | ('000)        | %          | ('000)        | %           |              |
| Public Administration and Safety                | 30.0                         | 80.4            | 74.9         | 66.7         | 5.5           | 7.4        | 13.7          | 20.6        | 41           |
| Professional, Scientific and Technical Services | 12.7                         | 34.1            | 36.8         | 26.0         | -2.7          | -7.3       | 8.1           | 31.3        | 38           |
| Health Care and Social Assistance               | 12.0                         | 32.2            | 30.0         | 24.5         | 2.2           | 7.4        | 7.7           | 31.3        | 38           |
| Education and Training                          | 9.1                          | 24.5            | 23.9         | 23.7         | 0.6           | 2.4        | 0.7           | 3.1         | 40           |
| Construction                                    | 6.5                          | 17.5            | 16.6         | 18.6         | 0.9           | 5.5        | -1.1          | -5.7        | 35           |
| Accommodation and Food Services                 | 6.0                          | 16.1            | 16.8         | 13.8         | -0.7          | -3.9       | 2.3           | 16.4        | 25           |
| Retail Trade                                    | 5.9                          | 15.9            | 18.0         | 16.2         | -2.1          | -11.7      | -0.3          | -1.8        | 28           |
| Administrative and Support Services             | 2.6                          | 6.8             | 6.7          | 8.4          | 0.1           | 1.8        | -1.6          | -18.8       | 39           |
| Other Services                                  | 2.5                          | 6.7             | 8.6          | 8.6          | -1.8          | -21.3      | -1.9          | -21.6       | 36           |
| Transport, Postal and Warehousing               | 2.2                          | 5.9             | 5.6          | 6.5          | 0.4           | 6.3        | -0.6          | -9.2        | 41           |
| Arts and Recreation Services                    | 2.1                          | 5.8             | 5.6          | 4.2          | 0.1           | 2.6        | 1.5           | 35.4        | 32           |
| Manufacturing                                   | 1.8                          | 4.7             | 4.8          | 4.1          | -0.1          | -2.7       | 0.6           | 13.9        | 38           |
| Financial and Insurance Services                | 1.7                          | 4.7             | 4.5          | 3.3          | 0.2           | 4.0        | 1.4           | 42.1        | 39           |
| Information Media and Telecommunications        | 1.4                          | 3.7             | 4.2          | 3.5          | -0.6          | -13.9      | 0.2           | 5.2         | 39           |
| Rental, Hiring and Real Estate Services         | 1.3                          | 3.5             | 3.2          | 2.7          | 0.2           | 7.3        | 0.8           | 28.7        | 38           |
| Electricity, Gas, Water and Waste Services      | 0.9                          | 2.5             | 2.0          | 1.4          | 0.5           | 26.0       | 1.2           | 83.0        | 39           |
| Wholesale Trade                                 | 0.9                          | 2.3             | 3.0          | 2.9          | -0.7          | -23.1      | -0.6          | -21.5       | 40           |
| Agriculture, Forestry and Fishing               | 0.2                          | 0.6             | 0.6          | 0.3          | 0.1           | 10.5       | 0.3           | 108.2       | 41           |
| Mining  | 0.0                          | 0.1             | 0.1          | 0.0          | 0.0           | 32.1       | 0.1           | NA          | 43           |
| <b>All Industries</b>                           | <b>100.0</b>                 | <b>268.0</b>    | <b>265.8</b> | <b>235.6</b> | <b>2.2</b>    | <b>0.8</b> | <b>32.5</b>   | <b>13.8</b> | <b>38</b>    |

Source: ABS Labour Force Survey, Detailed, four quarter averages, August 2024. \*Median age is from the ABS Census of Population and Housing, 2021.



# Employment Region Industry profile

## Capital Region Employment Region

Release date: 17 October 2024

### Overview

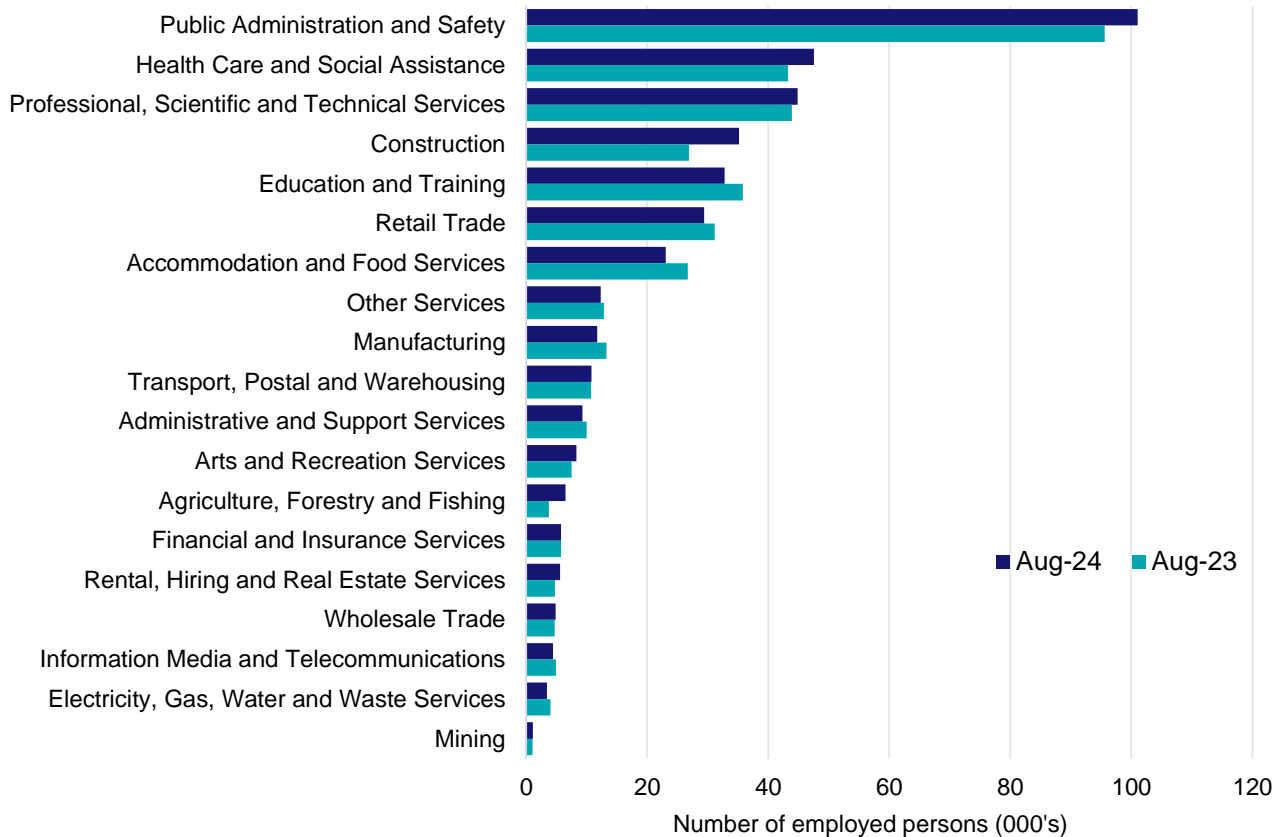
In August 2024, there were around 398,400 people employed in the Capital Region Employment Region. The 5 largest employing industries in the region were Public Administration and Safety, Health Care and Social Assistance, Professional, Scientific and Technical Services, Construction, and Education and Training. Together these 5 industries accounted for 66% of employment in the region.

Over the year to August 2024, employment in:

- Public Administration and Safety rose by 5.7% to stand at 101,000
- Health Care and Social Assistance rose by 10.0% to stand at 47,600
- Professional, Scientific and Technical Services rose by 2.2% to stand at 44,800.

In Public Administration and Safety in the Capital Region Employment Region, 90% of workers were employed full-time; 54% were female; and the median age of the workforce was 41.

### Employment by industry, August 2024 and August 2023



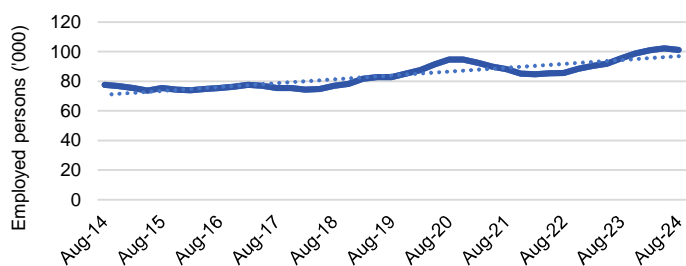
Source: ABS Labour Force Survey\*, Detailed, four quarter averages, August 2024. Note that total employment for the region (four quarter averaged data) will not match data published in the Employment Region Labour Market dashboards (modelled estimates).

\*ABS Labour Force Survey data are based on the combined SA4s of Australian Capital Territory and Capital Region.

Notes: Data are the latest available. A high degree of caution should be exercised when interpreting data at the regional level, particularly in regards to percentage changes, given the volatility of the underlying data. For any enquiries related to the data in this report, please contact [RegionalWorkforceAssessment@jobsandskills.gov.au](mailto:RegionalWorkforceAssessment@jobsandskills.gov.au)

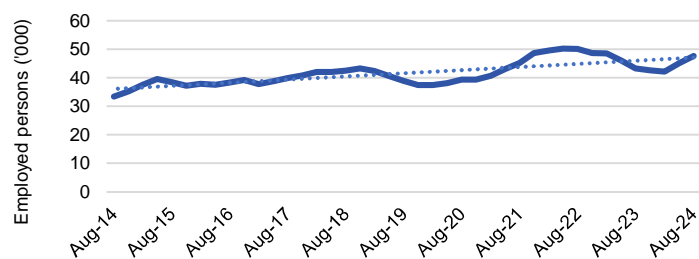
# Five largest employing industries: key statistics

## Public Administration and Safety



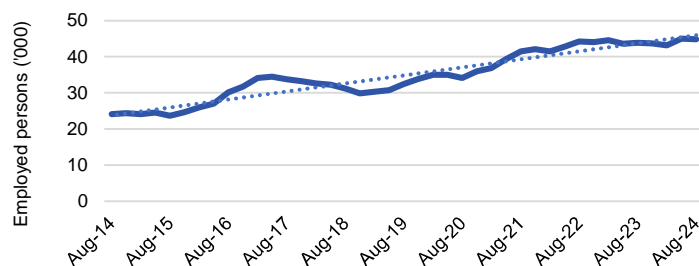
|                                 |         |
|---------------------------------|---------|
| Number employed (Aug-24):       | 101,000 |
| 1 year employment change:       | 5.7%    |
| 5 year employment change:       | 22.0%   |
| 10 year employment change:      | 30.3%   |
| Youth share of employment:      | 12.4%   |
| Mature age share of employment: | 25.0%   |

## Health Care and Social Assistance



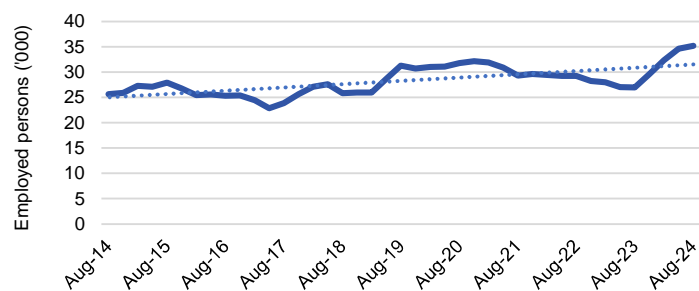
|                                 |        |
|---------------------------------|--------|
| Number employed (Aug-24):       | 47,600 |
| 1 year employment change:       | 10.0%  |
| 5 year employment change:       | 22.5%  |
| 10 year employment change:      | 42.5%  |
| Youth share of employment:      | 8.9%   |
| Mature age share of employment: | 13.0%  |

## Professional, Scientific and Technical Services



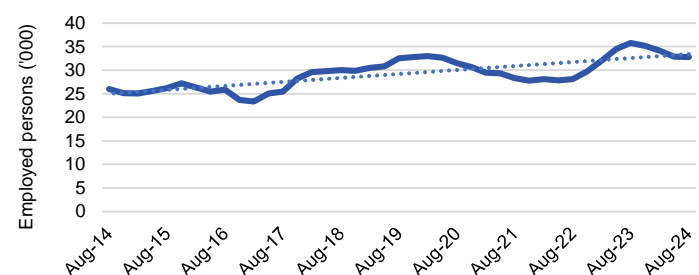
|                                 |        |
|---------------------------------|--------|
| Number employed (Aug-24):       | 44,800 |
| 1 year employment change:       | 2.2%   |
| 5 year employment change:       | 38.4%  |
| 10 year employment change:      | 86.4%  |
| Youth share of employment:      | 6.6%   |
| Mature age share of employment: | 9.6%   |

## Construction



|                                 |        |
|---------------------------------|--------|
| Number employed (Aug-24):       | 35,200 |
| 1 year employment change:       | 30.7%  |
| 5 year employment change:       | 12.5%  |
| 10 year employment change:      | 37.3%  |
| Youth share of employment:      | 9.0%   |
| Mature age share of employment: | 6.7%   |

## Education and Training



|                                 |        |
|---------------------------------|--------|
| Number employed (Aug-24):       | 32,800 |
| 1 year employment change:       | -8.4%  |
| 5 year employment change:       | 0.9%   |
| 10 year employment change:      | 26.3%  |
| Youth share of employment:      | 8.0%   |
| Mature age share of employment: | 10.2%  |

Source: ABS Labour Force Survey, Detailed, four quarter averages, August 2024, except youth and mature age data which are from the ABS Census of Population and Housing, 2021.

**Notes:** In each chart, the solid line is the level of employment and the dotted line is a simple linear trend line for the 10 year period. Given the volatility of the underlying data, employment estimates should be treated with a high degree of caution. Particular focus should be placed on the employment series over time to ascertain more reliable long-term growth trends.

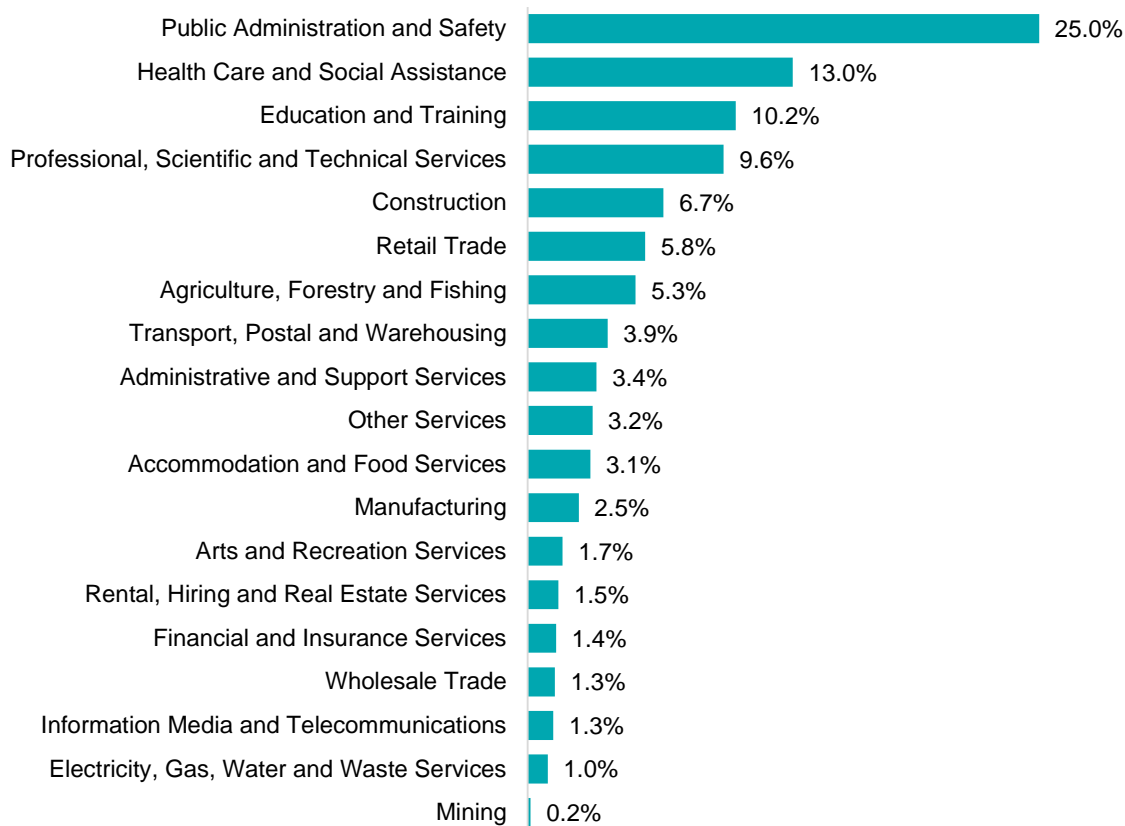
## Employment characteristics by Industry

### Which industries are youth (aged 15-24) employed in?



Source: ABS Census of Population and Housing, 2021.

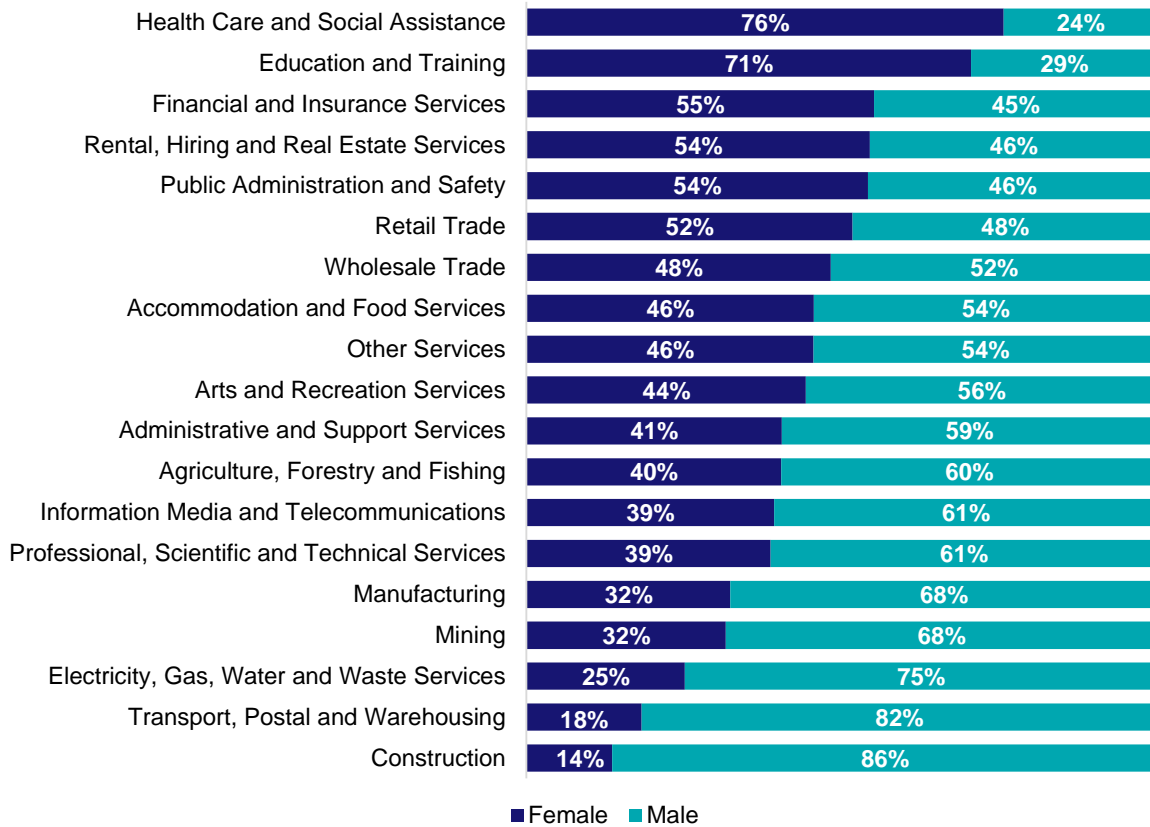
### Which industries are mature age persons (aged 55+) employed in?



Source: ABS Census of Population and Housing, 2021. Note: SA2 level Census data have been aggregated to the Employment Region level.

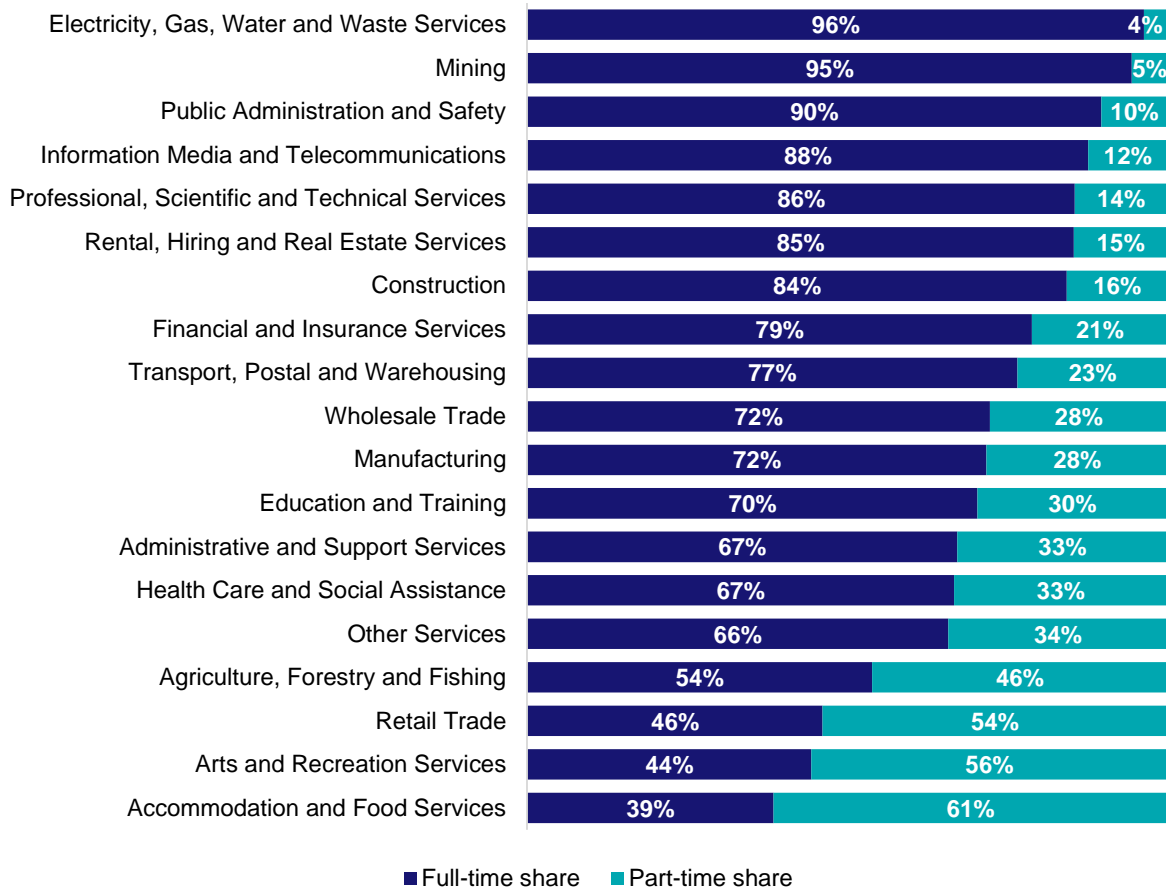


## Gender share by industry



Source: ABS Labour Force Survey, Detailed, four quarter averages, August 2024.

## Full-time and part-time employment status by industry



Source: ABS Labour Force Survey, Detailed, four quarter averages, August 2024.

## Appendix

### Employment by industry, Capital Region, August 2024

| Industry (in order of size)                     | Share of employment in the region Aug-24 (%) | Employed ('000) |              |              | Full-time share % | Part-time share % | Median age * |
|---|--|-----------------|--------------|--------------|-------------------|-------------------|--------------|
|   |  | Aug-24          | Aug-23       | Aug-19       |                   |                   |              |
| Public Administration and Safety                | 25.4   | 101.0           | 95.6         | 82.8         | 89.7              | 10.3              | 41           |
| Health Care and Social Assistance               | 11.9   | 47.6            | 43.3         | 38.9         | 66.7              | 33.3              | 39           |
| Professional, Scientific and Technical Services | 11.3   | 44.8            | 43.9         | 32.4         | 85.6              | 14.4              | 39           |
| Construction                                    | 8.8  | 35.2            | 26.9         | 31.3         | 84.3              | 15.7              | 36           |
| Education and Training                          | 8.2  | 32.8            | 35.8         | 32.5         | 70.4              | 29.6              | 40           |
| Retail Trade                                    | 7.4  | 29.4            | 31.2         | 26.8         | 46.2              | 53.8              | 29           |
| Accommodation and Food Services                 | 5.8  | 23.1            | 26.7         | 26.2         | 38.5              | 61.5              | 24           |
| Other Services                                  | 3.1  | 12.4            | 12.9         | 13.9         | 65.8              | 34.2              | 36           |
| Manufacturing                                   | 3.0  | 11.8            | 13.3         | 9.3          | 71.8              | 28.2              | 38           |
| Transport, Postal and Warehousing               | 2.7  | 10.8            | 10.7         | 10.1         | 76.6              | 23.4              | 42           |
| Administrative and Support Services             | 2.3  | 9.3             | 10.0         | 11.8         | 67.2              | 32.8              | 39           |
| Arts and Recreation Services                    | 2.1  | 8.3             | 7.5          | 6.0          | 44.4              | 55.6              | 30           |
| Agriculture, Forestry and Fishing               | 1.6  | 6.5             | 3.8          | 9.6          | 54.0              | 46.0              | 56           |
| Financial and Insurance Services                | 1.5  | 5.8             | 5.8          | 4.2          | 78.9              | 21.1              | 38           |
| Rental, Hiring and Real Estate Services         | 1.4  | 5.6             | 4.8          | 3.0          | 85.4              | 14.6              | 36           |
| Wholesale Trade                                 | 1.2  | 4.9             | 4.7          | 3.8          | 72.3              | 27.7              | 42           |
| Information Media and Telecommunications        | 1.1  | 4.5             | 5.0          | 4.9          | 87.7              | 12.3              | 38           |
| Electricity, Gas, Water and Waste Services      | 0.9  | 3.4             | 4.0          | 3.6          | 96.4              | 3.6               | 40           |
| Mining  | 0.3  | 1.1             | 1.1          | 1.2          | 94.5              | 5.5               | 39           |
| <b>All industries</b>                           | <b>100.0</b>                                 | <b>398.4</b>    | <b>386.9</b> | <b>352.3</b> | <b>74.2</b>       | <b>25.8</b>       | <b>38</b>    |

Source: ABS Labour Force Survey, Detailed, four quarter averages, August 2024. \*Median age is from the ABS Census of Population and Housing, 2021. Median age has been derived using aggregated SA2s for the Employment Region.

**Note: Small cells should be viewed with caution due to small sample sizes and regional volatility.**